



Department of
**Finance and
Personnel**

www.dfpni.gov.uk

Northern Ireland Construction Bulletin 1 October to 31 December 2004

12th May 2005



Commerce, Energy and Industry

STATISTICAL BULLETIN



Northern Ireland
**Statistics &
Research
Agency**

A National Statistics Publication

Contents

	Page
Introduction.....	3
Key Findings.....	3
Chapter 1 Output	4
1.1 Index of Construction.....	4
1.2 Index of New Work.....	5
1.3 Index of Repair & Maintenance.....	6
1.4 Index of Housing.....	7
1.5 Index of Infrastructure.....	8
1.6 Index of Other Work.....	9
1.7 Value of Construction Output.....	10
1.8(a) Output (Current Prices).....	12
1.8(b) Output (Constant Prices and Seasonally adjusted).....	13
1.9 Private Contractors: Value of Work Done By Stratum.....	14
1.10 Contractors Output (New Work only) by Type of Work.....	15
1.11 National Lottery Awards to Northern Ireland.....	16
Chapter 2 The Structure of the Industry.....	17
2.1 Structure of the Construction Industry.....	17
2.2 Northern Ireland Census of Employment.....	18
2.3 Northern Ireland Employee Jobs in Construction.....	19
2.4 Northern Ireland Labour Force Survey.....	19
2.5 Northern Ireland New Earnings Survey Earnings and Hours in the Construction Industry.....	20
2.6 Northern Ireland New Earnings Survey. Earnings in the Construction Industry by Craft.....	21
2.7 Northern Ireland New Earnings Survey Earnings and Hours in the Construction Industry and in all industries and Services.....	21
2.8 Statistics of accidents reported to HSENI 1997/98-2002/03.....	22
Survey Response.....	25
Notes to Editors.....	26

Northern Ireland Construction Bulletin

1 October to 31 December 2004

Introduction

The Northern Ireland Construction Bulletin is produced by the Central Survey Unit of the Northern Ireland Statistics and Research Agency, on behalf of the Department of Finance and Personnel.

The Bulletin contains information on the value of Construction Output in Northern Ireland. These figures are derived from the Northern Ireland Quarterly Construction Enquiry (QCE). This is a statutory survey of construction firms operating in Northern Ireland. Each quarter a sample of construction firms are asked to provide details of the value of construction activity they have undertaken in a specified period. The QCE principally produces the Index of Construction, which is an estimate of the volume of construction output. It is an important economic indicator, which contributes to the calculation of UK GDP.

Additional information on the Northern Ireland Construction Industry is also contained in the Bulletin. This information is provided by the Statistics Research Branch of the Department of Enterprise, Trade and Investment and the Health and Safety Executive Northern Ireland (from a variety of survey sources).

Key Findings

The key findings from the QCE covering the period 1 October – 31 December 2004 were as follows:

- The seasonally adjusted Index of Construction was 101.5, up 1.7 points on the previous quarter (99.8) and down 2.7 points on the corresponding quarter in 2003 (104.2) (Table 1.1)
- The estimated seasonally adjusted value of construction output (at 2000 prices) was £563 million, an increase of 1.8% (£10 million) on the previous quarter (£553 million) and a decrease of 2.6% on the corresponding quarter in 2003 (£578 million) (Table 1.7)

Chapter 1 Output

Table 1.1 Index of Construction			
Index 2000=100			
Year / Quarter	Unadjusted	Seasonally Adjusted	
2000	Jan - Mar	101.4	100.0
	Apr - Jun	103.8	103.6
	Jul - Sep	101.3	101.4
	Oct - Dec	93.9	95.3
2001	Jan - Mar	110.2	109.5
	Apr - Jun	102.9	101.6
	Jul - Sep	102.4	102.6
	Oct - Dec	103.2	104.8
2002	Jan - Mar	100.0	100.0
	Apr - Jun	103.3	101.3
	Jul - Sep	97.9	98.2
	Oct - Dec	95.8	97.3
2003	Jan - Mar	99.1	99.6
	Apr - Jun	104.5	102.0
	Jul - Sep	105.6	106.0
	Oct - Dec	102.6	104.2
2004	Jan - Mar	100.0	100.7
	Apr - Jun	105.5	102.8
	Jul - Sep	99.5	99.8
	Oct - Dec	99.9	101.5

Figure 1.1 Index of Construction
 Quarters ending March 2000 to December 2004

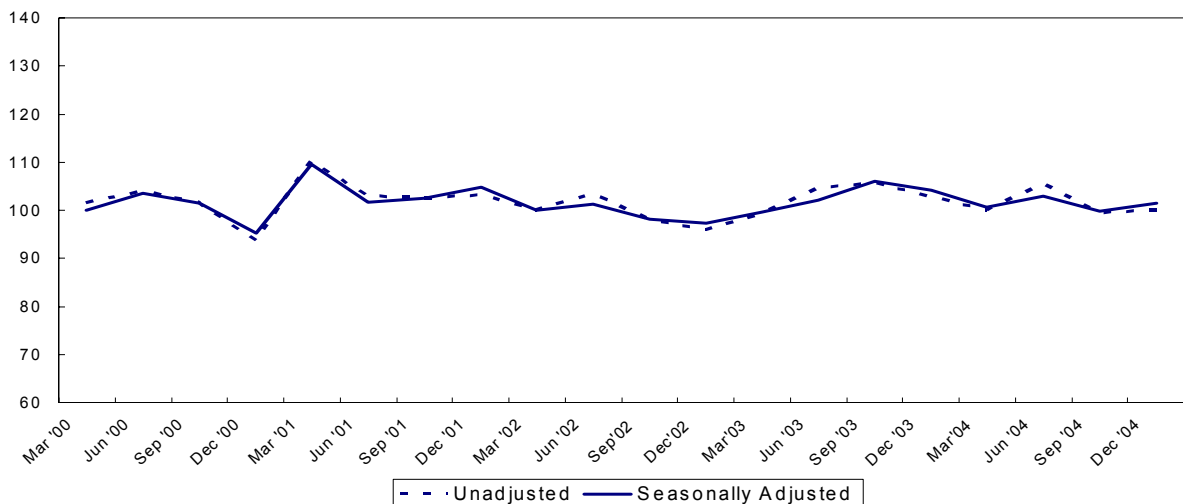


Table 1.2 Index of New Work ¹			
Index 2000=100			
Year / Quarter	Unadjusted	Seasonally Adjusted	
2000	Jan - Mar	99.2	99.6
	Apr - Jun	105.5	104.3
	Jul - Sep	102.2	101.7
	Oct - Dec	93.6	94.5
2001	Jan - Mar	105.9	107.6
	Apr - Jun	103.4	101.0
	Jul - Sep	99.8	99.6
	Oct - Dec	103.6	104.2
2002	Jan - Mar	95.3	97.8
	Apr - Jun	100.1	97.0
	Jul - Sep	94.9	94.8
	Oct - Dec	93.9	94.3
2003	Jan - Mar	91.5	94.6
	Apr - Jun	101.7	98.0
	Jul - Sep	102.0	102.0
	Oct - Dec	100.5	100.7
2004	Jan - Mar	94.2	97.9
	Apr - Jun	103.8	99.9
	Jul - Sep	97.5	97.3
	Oct - Dec	97.9	98.1

¹New work relates to new construction including housing, factory and office extensions, major reconstruction, major alteration, site preparation and demolition

Figure 1.2 Index of New Work
Quarters ending March 2000 to December 2004

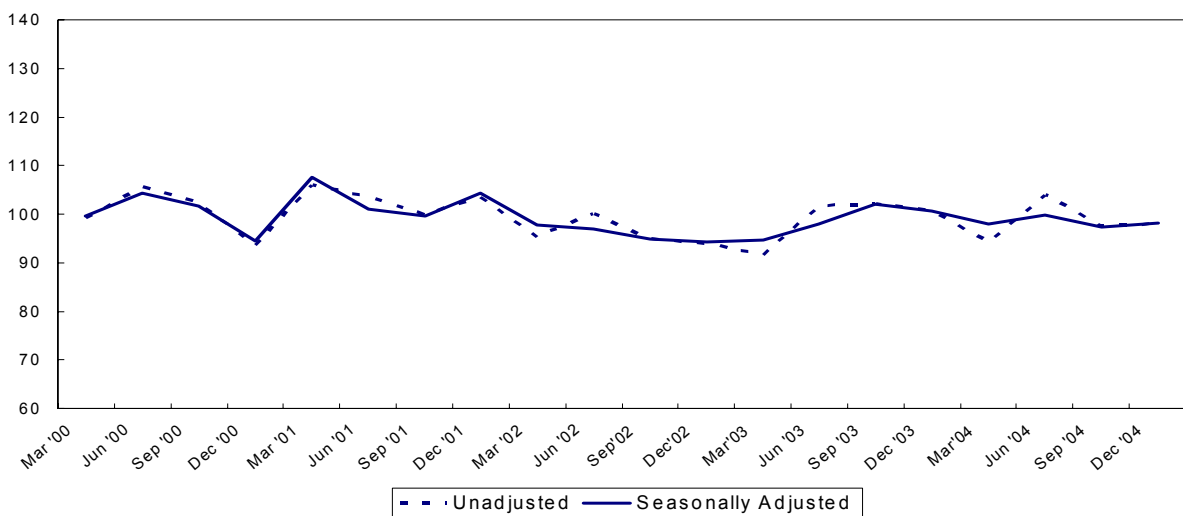


Table 1.3 Index of Repair and Maintenance ¹		
Index 2000=100		
Year / Quarter	Unadjusted	Seasonally Adjusted
2000 Jan - Mar	112.6	100.2
Apr - Jun	95.2	100.0
Jul - Sep	96.9	98.7
Oct - Dec	95.2	101.9
2001 Jan - Mar	132.1	117.0
Apr - Jun	100.4	104.8
Jul - Sep	115.6	117.5
Oct - Dec	101.2	109.5
2002 Jan - Mar	124.3	109.7
Apr - Jun	119.6	124.2
Jul - Sep	113.4	115.6
Oct - Dec	105.5	114.6
2003 Jan - Mar	138.5	122.1
Apr - Jun	119.2	123.1
Jul - Sep	123.9	126.7
Oct - Dec	113.5	123.2
2004 Jan - Mar	129.8	114.6
Apr - Jun	114.1	117.5
Jul - Sep	109.7	112.6
Oct - Dec	110.2	119.3

¹ Repair & Maintenance includes all on-site work not defined as new construction.

Figure 1.3 Index of Repair and Maintenance
Quarters ending March 2000 to December 2004

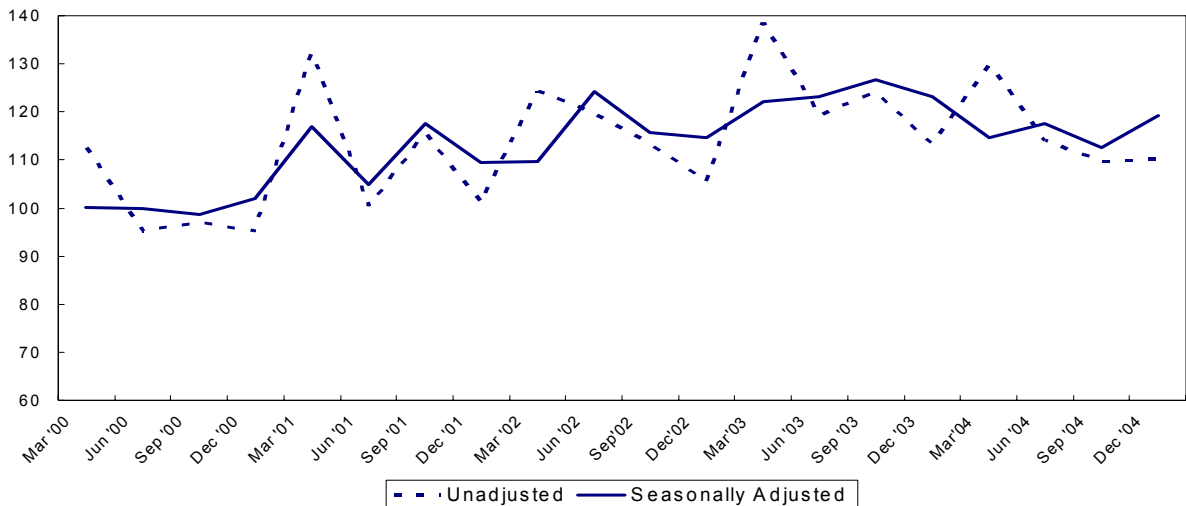


Table 1.4 Index of Housing ¹			
Index 2000=100			
Year / Quarter	Unadjusted	Seasonally Adjusted	
2000	Jan - Mar	98.0	100.4
	Apr - Jun	112.3	105.6
	Jul - Sep	95.4	96.3
	Oct - Dec	94.3	96.9
2001	Jan - Mar	103.8	106.7
	Apr - Jun	107.0	100.9
	Jul - Sep	103.1	103.6
	Oct - Dec	100.3	102.8
2002	Jan - Mar	97.8	100.8
	Apr - Jun	104.6	99.2
	Jul - Sep	100.7	100.7
	Oct - Dec	101.9	104.1
2003	Jan - Mar	98.8	102.1
	Apr - Jun	112.5	107.4
	Jul - Sep	111.0	110.3
	Oct - Dec	105.6	107.5
2004	Jan - Mar	99.4	103.1
	Apr - Jun	104.8	100.5
	Jul - Sep	103.3	102.2
	Oct - Dec	100.2	101.8

¹ Housing relates to all housing construction activity, both private and public sector.

Figure 1.4 Index of Housing
Quarters Ending March 2000 to December 2004

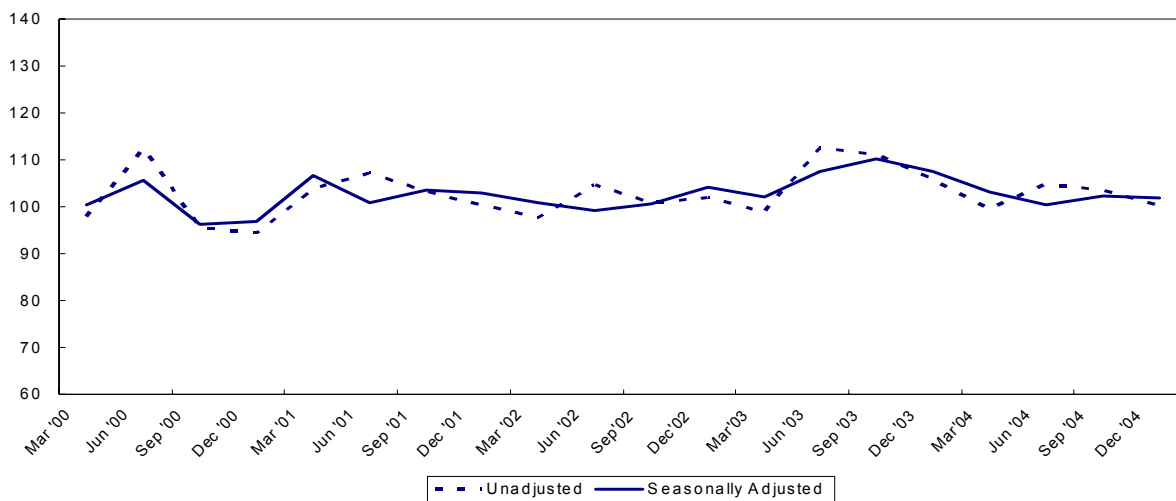


Table 1.5 Index of Infrastructure ¹			
Index 2000=100			
Year / Quarter	Unadjusted	Seasonally Adjusted	
2000	Jan - Mar	115.2	108.1
	Apr - Jun	108.9	113.2
	Jul - Sep	98.5	96.8
	Oct - Dec	77.8	81.2
2001	Jan - Mar	96.1	91.3
	Apr - Jun	62.9	64.4
	Jul - Sep	75.8	74.9
	Oct - Dec	98.6	102.6
2002	Jan - Mar	88.8	84.8
	Apr - Jun	97.6	99.1
	Jul - Sep	109.7	109.1
	Oct - Dec	105.2	109.0
2003	Jan - Mar	114.1	109.5
	Apr - Jun	119.7	121.0
	Jul - Sep	118.9	118.8
	Oct - Dec	105.5	108.8
2004	Jan - Mar	113.0	108.9
	Apr - Jun	109.0	110.0
	Jul - Sep	103.9	103.9
	Oct - Dec	113.6	116.9

¹ Infrastructure includes work on roads and car parks, water and sewerage, electricity, gas, communication, air transport, railways, harbours and waterways

Figure 1.5 Index of Infrastructure
Quarters Ending March 2000 to December 2004

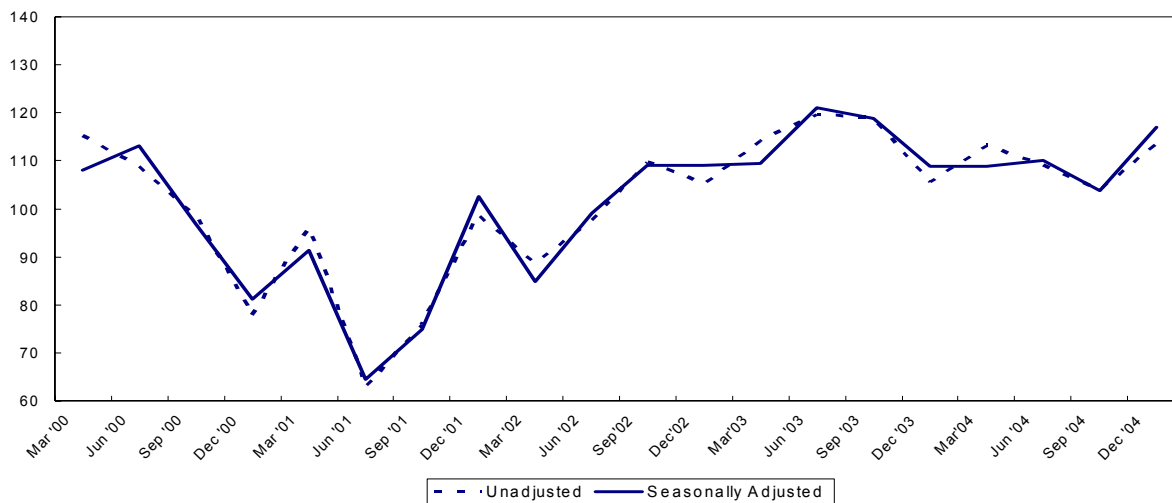


Table 1.6 Index of Other Work ¹			
Index 2000=100			
Year / Quarter	Unadjusted	Seasonally Adjusted	
2000	Jan - Mar	101.1	94.9
	Apr - Jun	94.4	100.0
	Jul - Sep	107.8	108.9
	Oct - Dec	97.6	97.9
2001	Jan - Mar	119.9	113.4
	Apr - Jun	109.1	113.4
	Jul - Sep	108.5	109.8
	Oct - Dec	107.1	108.1
2002	Jan - Mar	105.0	100.1
	Apr - Jun	103.4	105.6
	Jul - Sep	92.2	93.6
	Oct - Dec	87.5	88.6
2003	Jan - Mar	95.7	92.0
	Apr - Jun	93.0	93.6
	Jul - Sep	97.0	98.9
	Oct - Dec	99.0	100.3
2004	Jan - Mar	97.2	94.1
	Apr - Jun	105.2	105.0
	Jul - Sep	94.7	96.8
	Oct - Dec	96.2	97.4

¹Other work includes factories, warehouse, oil, steel, gas and coal, school, colleges, offices, banks, shops, universities, entertainment, agriculture, health, welfare, garages and miscellaneous.

Figure 1.6 Index of Other Work
Quarters Ending March 2000 to December 2004

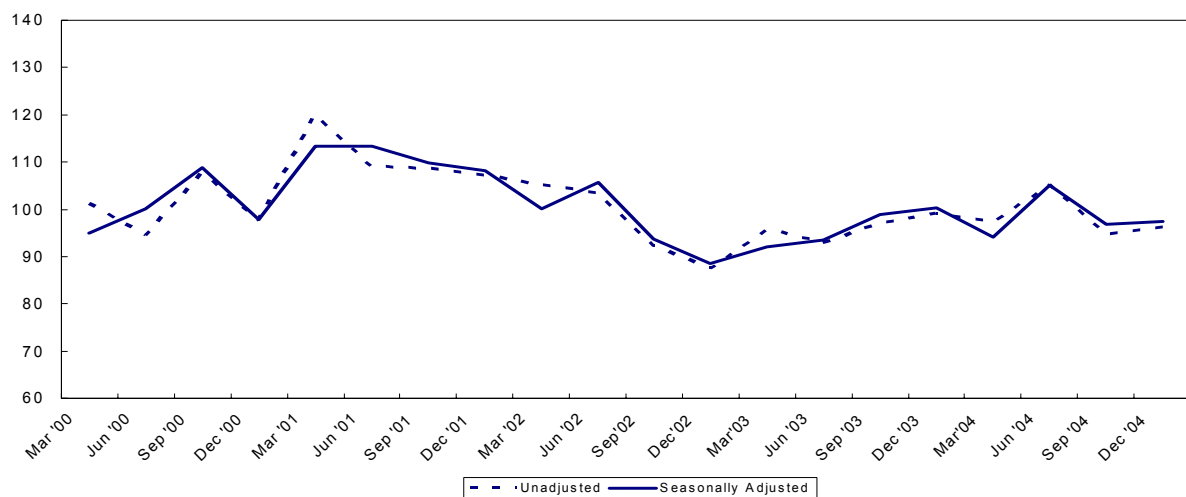


Table 1.7 Value of Construction Output			
Index 2000=100			
Year / Quarter	Current prices (£ Million)	2000 prices (£ Million)	2000 prices and Seasonally Adjusted (£ Million)
2000 Jan - Mar	551	562	554
Apr - Jun	572	576	574
Jul - Sep	565	562	562
Oct - Dec	529	520	528
Total	2,218	2,220	2,219
2001 Jan - Mar	626	611	607
Apr - Jun	590	570	563
Jul - Sep	595	568	569
Oct - Dec	604	572	581
Total	2,415	2,321	2,320
2002 Jan - Mar	589	554	555
Apr - Jun	612	572	561
Jul - Sep	591	543	545
Oct - Dec	581	531	539
Total	2,372	2,201	2,200
2003 Jan - Mar	604	550	552
Apr - Jun	643	579	566
Jul - Sep	672	585	588
Oct - Dec	668	569	578
Total	2,587	2,283	2,283
2004 Jan - Mar	658	554	558
Apr - Jun	699	585	570
Jul - Sep	672	551	553
Oct - Dec	676	554	563
Total	2,705	2,239	2,244

Figure 1.7 Value of Construction Output
 Quarters Ending March 2000 to December 2004

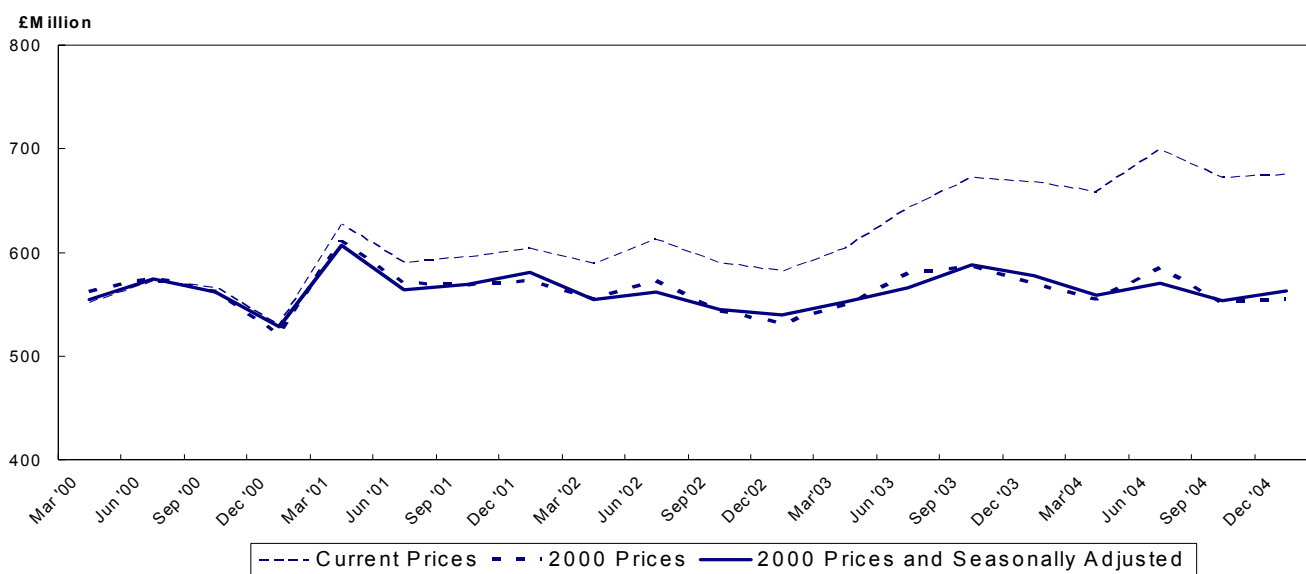


Table 1.8 (a) Output¹
Current Prices (£ million)

YEAR/ QUARTER	New housing		Other New Work non-housing				All New Work	Repair and Maintenance						All Repair & maintenance	All Work
	Public	Private	Infra - structure	Other New Work exc infrastructure				Housing		Other Work					
				Public	Private Industrial	Private Commercial		Public	Private	Infra - structure	Public	Private			
2000 Jan - Mar	24.2	162.8	56.0	90.7	22.9	94.4	451.1	23.8	19.6	15.8	31.0	9.6	99.8	550.9	
Apr - Jun	22.4	205.8	54.5	93.5	27.3	84.5	488.1	21.0	20.9	13.9	17.4	11.2	84.4	572.5	
Jul - Sep	20.4	172.8	53.2	114.0	20.3	96.0	476.7	18.6	20.4	9.8	25.2	14.7	88.6	565.4	
Oct - Dec	20.4	181.3	33.0	91.2	18.8	96.7	441.4	16.6	14.1	17.4	22.4	17.0	87.5	528.9	
2001 Jan - Mar	26.4	190.3	44.4	114.5	21.1	107.7	504.3	23.3	19.0	18.3	34.9	26.7	122.1	626.4	
Apr - Jun	30.2	199.6	31.9	120.4	18.6	96.0	496.8	21.5	18.8	9.3	18.7	24.4	92.8	589.6	
Jul - Sep	25.7	196.4	33.5	119.2	12.0	99.4	486.3	24.9	18.6	16.6	25.3	23.8	109.2	595.4	
Oct - Dec	29.4	195.8	48.3	102.2	19.2	112.7	507.6	18.5	17.7	17.8	26.9	15.1	96.0	603.7	
2002 Jan - Mar	32.8	173.5	43.7	91.4	23.3	105.3	470.0	33.4	17.6	16.2	35.4	16.1	118.7	588.7	
Apr - Jun	36.7	188.4	46.7	93.3	22.3	108.9	496.4	34.9	17.2	19.3	25.2	18.5	115.2	611.6	
Jul - Sep	29.8	197.6	51.0	89.0	20.8	88.6	476.7	30.3	14.7	24.8	21.9	22.1	113.8	590.5	
Oct - Dec	32.3	197.0	49.1	74.1	33.6	88.5	474.7	31.4	17.4	24.1	20.6	13.1	106.7	581.4	
2003 Jan - Mar	27.4	183.6	54.7	96.9	20.2	79.9	462.7	35.0	24.2	24.8	39.9	16.9	140.8	603.5	
Apr - Jun	27.8	228.7	59.6	82.7	33.1	88.6	520.5	32.5	22.7	24.6	25.4	17.2	122.4	642.8	
Jul - Sep	27.7	246.5	58.8	96.3	17.9	94.8	541.9	26.6	28.0	24.0	31.4	20.4	130.4	672.4	
Oct - Dec	30.3	240.3	51.7	108.3	22.4	94.7	547.9	29.4	21.6	22.8	27.4	18.9	120.2	668.1	
2004 Jan - Mar	25.0	230.2	49.0	101.1	19.5	94.7	519.5	29.3	24.8	31.6	37.0	15.6	138.2	657.8	
Apr - Jun	27.0	251.7	51.6	98.9	22.6	124.9	576.7	32.7	20.1	26.8	24.4	18.4	122.4	699.1	
Jul - Sep	30.2	247.7	50.9	95.1	19.6	105.9	549.3	31.0	22.3	25.0	26.9	17.9	123.0	672.4	
Oct - Dec	30.3	239.9	61.8	103.0	17.3	99.7	552.0	33.0	19.3	20.2	32.4	18.6	123.5	675.5	

¹ Includes output by contractors and public sector direct labour departments

Table 1.8 (b) Output¹
Constant (2000) Prices and Seasonally Adjusted (£ million)

YEAR/ QUARTER	New housing		Other New Work non-housing				All New Work	Repair and Maintenance						All Work
			Infra - structure	Other New Work exc infrastructure				Housing		Other Work			All Repair & Maintenance	
	Public	Private		Public	Private Industrial	Private Commercial		Public	Private	Infra - structure	Public	Private		
2000 Jan - Mar	22.8	175.1	57.1	92.3	21.1	96.0	462.6	22.8	19.6	13.6	23.9	10.1	90.3	554.2
Apr - Jun	21.4	196.5	55.0	94.3	26.5	90.0	484.0	20.8	20.3	15.5	22.4	11.3	90.1	574.3
Jul - Sep	21.9	168.9	52.8	114.1	23.5	94.6	472.3	19.1	20.3	10.2	25.9	13.9	88.9	561.8
Oct - Dec	20.6	180.0	32.4	90.5	18.2	92.8	438.7	17.2	14.9	17.1	24.2	17.3	91.8	528.4
2001 Jan - Mar	24.7	192.5	43.2	112.6	19.3	106.2	499.6	21.2	17.7	15.9	25.3	26.8	105.4	607.1
Apr - Jun	27.9	181.2	30.8	117.5	17.6	97.5	468.9	20.3	17.7	9.7	23.0	23.4	94.5	563.4
Jul - Sep	26.6	178.9	32.1	115.4	13.9	96.2	462.4	25.2	17.8	16.5	25.2	21.3	105.9	568.6
Oct - Dec	28.0	182.1	45.8	98.9	18.2	107.8	484.0	18.7	18.4	17.0	28.6	15.2	98.7	580.9
2002 Jan - Mar	30.5	165.3	41.1	87.8	21.0	104.6	454.1	29.3	15.6	14.0	24.5	15.6	98.8	554.5
Apr - Jun	33.0	162.0	43.9	88.9	20.3	106.9	450.2	31.3	15.8	18.8	29.5	17.1	112.0	561.4
Jul - Sep	29.4	171.1	47.1	84.1	23.8	86.7	440.3	29.3	13.2	22.7	20.8	18.4	104.2	544.5
Oct - Dec	29.4	174.0	45.4	69.4	30.9	86.4	437.8	29.6	17.0	22.1	20.6	12.6	103.3	539.2
2003 Jan - Mar	25.5	169.9	50.6	90.9	17.9	80.6	439.3	28.9	20.0	20.1	26.1	15.4	110.1	552.2
Apr - Jun	24.6	189.5	54.7	76.9	28.8	85.0	455.1	27.1	19.8	22.0	27.3	14.9	111.0	565.7
Jul - Sep	26.0	190.9	55.3	89.6	20.3	91.3	473.6	25.0	24.4	20.1	28.9	16.4	114.2	587.6
Oct - Dec	25.6	185.9	47.8	98.4	20.7	87.9	467.5	26.4	20.1	20.4	25.9	17.2	111.1	577.6
2004 Jan - Mar	21.9	183.7	45.3	91.2	17.7	91.6	454.5	23.2	19.4	24.3	23.2	13.7	103.2	558.1
Apr - Jun	22.2	178.1	46.9	88.6	20.3	111.5	463.7	26.0	17.0	22.7	24.8	15.2	105.9	569.9
Jul - Sep	26.4	175.6	46.3	85.1	21.7	97.1	452.0	27.4	18.2	19.5	23.6	13.7	101.5	553.1
Oct - Dec	24.2	175.2	56.2	92.2	15.7	91.2	455.4	27.8	16.9	17.3	28.8	15.7	107.5	562.9

¹ Includes output by contractors and public sector direct labour departments

Table 1.9 Output¹ (Private Contractors only) by Stratum² of Firm

Current Prices (£million)

4th Quarter 2004

Stratum of Firm	Annual Turnover (£'000)	New housing		Other New Work non-housing				All New Work	Repair and Maintenance						All Work
		Public	Private	Infra - structure	Other New Work exc infrastructure				Housing		Other Work			All Repair & maintenance	
					Public	Private Industrial	Private Commercial		Public	Private	Infra - structure	Public	Private		
1	0-99	0.0	1.3	0.0	0.0	0.0	0.5	1.8	0.1	4.9	0.0	0.5	1.2	6.7	8.5
2	100-499	0.7	43.9	8.5	0.2	0.0	5.5	58.8	2.4	10.3	2.5	4.5	5.5	25.1	83.9
3	500-1,999	6.1	66.2	3.7	8.1	1.1	21.4	106.6	15.0	4.0	1.2	6.3	7.1	33.6	140.2
4	2,000-4,999	8.8	59.0	6.6	16.2	8.0	19.3	117.8	10.7	0.1	2.1	0.9	2.0	15.8	133.6
5	5,000-9,999	7.5	31.2	14.8	8.2	1.1	9.2	72.0	3.8	0.1	1.8	3.5	2.1	11.3	83.4
6	10,000+	7.1	38.3	28.1	55.6	7.2	43.7	180.1	0.1	0.1	0.8	1.9	0.7	3.6	183.7
Total		30.3	239.9	61.7	88.3	17.3	99.7	537.1	32.2	19.3	8.4	17.6	18.6	96.1	633.2

¹Includes output by Contractors only

² Firms are stratified by turnover

Table 1.10 Contractors Output¹ (New Work Only) by Type of Work

Current Prices (£ million)

a) New Work for Public Sector

Year	New housing	Infra - structure	Factories	Ware-houses	Oil, steel& coal	Schools &Colleges	Uni-versities	Health	Offices	Enter - tainment	Garages	Shops	Agri- culture	Miscell- aneous	All public sector
2000	87.4	137.5	5.0	3.3	0.0	80.1	11.8	68.1	30.6	88.8	0.0	0.0	0.5	63.6	576.6
2001	111.8	111.7	3.6	2.1	0.0	172.3	16.0	55.3	42.0	35.9	0.0	0.0	1.2	86.7	638.6
2002	131.6	139.2	3.9	10.2	0.0	107.4	12.5	32.0	36.4	27.4	0.0	0.0	2.2	72.1	575.0
2003	113.1	151.0	2.5	3.0	0.0	111.1	25.6	81.0	26.8	17.9	0.0	0.0	0.0	53.2	585.2
2004	112.4	178.3	0.3	1.0	0.0	105.2	30.5	104.7	43.5	18.4	0.0	0.0	0.0	42.0	636.3

b) New Work for Private Sector

Year	New housing	Infra - structure	Factories	Ware-houses	Oil, steel& coal	Schools &Colleges	Uni-versities	Health	Offices	Enter- tainment	Garages	Shops	Agri- culture	Miscell- aneous	All private sector
2000	722.7	58.7	68.0	21.3	0.0	0.0	0.0	12.3	116.2	96.6	5.6	44.4	0.1	96.5	1242.3
2001	782.2	45.7	46.0	23.9	1.0	0.0	0.0	10.8	100.5	83.7	7.7	109.8	0.2	103.0	1314.5
2002	756.5	50.8	59.3	40.7	0.0	0.0	0.0	8.9	51.3	80.6	5.3	109.2	0.0	136.0	1298.6
2003	899.1	73.5	42.4	50.3	0.8	0.0	0.0	17.7	43.4	39.1	4.3	122.7	1.2	129.6	1424.2
2004	969.5	34.2	37.1	41.0	0.9	0.0	0.4	21.1	91.1	28.4	2.2	159.3	2.3	120.3	1507.8

c) New Work for Public and Private Sector

Year	New housing	Infra - structure	Factories	Ware-houses	Oil, steel& coal	Schools &Colleges	Uni-versities	Health	Offices	Enter - tainment	Garages	Shops	Agri- culture	Miscell- aneous	All Public & Private Work
2000	810.1	196.3	72.9	24.6	0.0	80.1	11.8	80.3	146.7	185.4	5.6	44.4	0.5	160.1	1818.9
2001	893.9	157.4	49.6	25.9	1.0	172.3	16.0	66.2	142.5	119.6	7.7	109.8	1.4	189.7	1953.2
2002	888.1	190.0	63.3	50.9	0.0	107.4	12.5	40.9	87.7	108.0	5.3	109.2	2.2	208.1	1873.6
2003	1012.2	224.5	44.9	53.3	0.8	111.1	25.6	98.6	70.2	57.0	4.3	122.7	1.2	182.8	2009.3
2004	1081.9	212.4	37.4	41.9	0.9	105.2	30.9	125.8	134.6	46.8	2.2	159.3	2.3	162.4	2144.2

¹ Includes output by contractors only

Table 1.11 National Lottery Awards to Northern Ireland¹

Year / Quarter	ARTS		HERITAGE		HEALTH, EDUCATION & ENVIRONMENT		CHARITIES		SPORTS		TOTAL	
	No. of Awards	Total Capital Value (£Thous)	No. of Awards	Total Capital Value (£Thous)	No. of Awards	Total Capital Value (£Thous)	No. of Awards	Total Capital Value (£Thous)	No. of Awards	Total Capital Value (£Thous)	No. of Awards	Total Capital Value (£Thous)
2000 Jan - Mar	14	361.7	7	938.6	0	0	29	417.1	0	0	50	1717.36
Apr - Jun	2	20.0	10	5018.0	0	0	27	612.1	0	0	39	5650.10
Jul - Sep	0	0	1	162.0	0	0	22	82.0	0	0	23	244.00
Oct - Dec	8	137.6	6	1082.8	0	0	14	122.7	0	0	28	1343.10
2001 Jan - Mar	15	273.4	7	5448.6	0	0	3	61.3	37	1665.9	62	7449.20
Apr - Jun	22	890.3	3	889.5	0	0	1	1.3	14	618.5	37	2339.50
Jul - Sep	1	3.3	7	4996.0	0	0	30	166.0	7	18.3	48	5183.60
Oct - Dec	4	9.3	5	1222.5	3	9.9	18	151.6	9	520.6	39	1913.90
2002 Jan - Mar	11	36.3	15	3995.5	29	83.8	47	241.8	16	40.9	118	4398.40
Apr - Jun	11	92.8	2	52.7	22	76.5	27	137.5	7	14.8	69	374.30
Jul - Sep	13	375.5	15	4308.9	10	36.0	18	323.5	12	28.8	68	5072.60
Oct - Dec	3	8.8	5	1605.0	15	263.0	16	833.1	12	32.0	51	2741.92
2003 Jan - Mar	4	329.9	15	4023.4	30	192.5	44	555.9	20	48.8	113	5150.49
Apr - Jun	30	757.5	1	10.9	26	1661.2	11	73.9	13	35.7	81	2539.24
Jul - Sep	6	55.9	2	8.4	24	656.0	22	343.3	8	22.8	62	1086.54
Oct - Dec	8	23.8	2	53.7	25	524.6	12	41.7	15	46.0	62	689.80
2004 Jan - Mar	2	8.6	10	4198.6	19	82.9	7	504.9	7	28.0	45	4822.90
Apr - Jun	5	19.0	6	458.9	12	538.5	7	23.7	12	38.8	42	1078.87
Jul - Sep	9	31.6	2	5.6	20	71.5	11	290.2	12	50.6	54	449.44
Oct - Dec	5	14.5	1	4.2	21	89.0	19	401.9	15	51.9	61	561.52

¹ Figures relate only to those awards with a capital element.

Chapter 2 The Structure of the Industry

Table 2.1 Structure of the Construction Industry

The table below shows the number of businesses that are either registered for VAT with HM Customs and Excise or which operate a PAYE scheme with the Inland Revenue, at June 2004

SIC (2003) class/ subclass	Description	Turnover (£000) size band						Total
		0 -99	100 - 499	500 - 1,999	2,000 - 4,999	5,000 - 9,999	10,000+	
45.11	Demolition and wrecking of buildings; earth moving	60	40	10	0	0	0	105
45.12	Test drilling and boring	5	5	0	0	0	0	5
45.21	General construction of buildings and civil engineering works	980	1,335	545	145	40	40	3,085
45.22	Erection of roof coverings and frames	50	80	15	5	0	0	150
45.23	Construction of motorways, roads, railways, airfields and sports facilities	50	90	20	5	0	0	165
45.24	Construction of water projects	5	5	0	0	0	0	5
45.25	Other construction work involving special trades	305	230	45	10	0	0	590
45.31	Installation of electrical wiring and fittings	470	355	110	30	10	5	980
45.32	Insulation work activities	20	25	10	0	0	0	55
45.33	Plumbing	340	350	70	20	5	0	785
45.34	Other building installation	75	75	15	0	0	0	165
45.41	Plastering	150	125	10	0	0	0	290
45.42	Joinery installation	430	350	65	10	0	0	860
45.43	Floor and wall covering	45	65	15	5	0	0	130
45.44	Painting and glazing	185	225	25	5	5	0	440
45.45	Other building completion	115	110	20	0	0	0	250
45.50	Renting of construction or demolition equipment with operator	145	80	25	5	0	0	255
Total		3,425	3,540	1,000	240	65	50	8,320

Source: Inter Departmental Business Register, Office for National Statistics, Statistics Research Branch, Department of Enterprise, Trade and Investment

Figures have been rounded to the nearest 5 to avoid disclosure and thus figures may not add back to totals.

**Table 2.2 Northern Ireland Census of Employment
September 2003
Employee Jobs**

SIC03	BUSINESS DESCRIPTIONS	Male	Male	Male	Female	Female	Female	Total
		Full-time	Part-time		Full-time	Part-time		
F	CONSTRUCTION	30,914	1,305	32,219	2,412	1,379	3,791	36,010
45	Construction	30,914	1,305	32,219	2,412	1,379	3,791	36,010
451	Site preparation	502	11	513	15	14	29	542
4511	Demolition and wrecking of buildings; earth moving	*	*	*	*	*	*	*
4512	Test drilling and boring	*	*	*	*	*	*	*
452	Building of complete constructions or parts thereof, civil engineering	16,478	684	17,162	1,312	715	2,027	19,189
4521	General construction of buildings and civil engineering works	12,869	524	13,393	1,132	593	1,725	15,118
4522	Erection of roof covering and frames	*	*	*	*	*	*	*
4523	Construction of highways, roads, airfields and sports facilities	1,882	60	1,882	81	36	117	1,999
4524	Construction of water projects	*	*	*	*	*	*	*
4525	Other construction work involving special trades	1,298	70	1,368	70	45	115	1,483
45211	Construction of commercial buildings	604	10	614	38	33	71	685
45212	Construction of domestic buildings	7,746	411	8,157	638	435	1,073	9,230
45213	Construction of civil engineering constructions	4,519	103	4,622	456	125	581	5,203
453	Building installation	8,585	248	8,833	722	381	1,103	9,936
4531	Installation of electrical wiring and fittings	5,251	116	5,367	439	193	632	5,999
4532	Installation work activities	220	6	226	24	9	33	259
4533	Plumbing	2,861	110	2,971	231	158	389	3,360
4534	Other building installation	253	16	269	28	21	49	318
454	Building completion	4,598	336	4,934	331	242	573	5,507
4541	Plastering	536	53	589	18	14	32	621
4542	Joinery installation	1,684	150	1,834	122	102	224	2,058
4543	Floor and wall covering	291	29	320	47	25	72	392
4544	Painting and glazing	1,398	74	1,472	103	64	167	1,639
4545	Other building completion	689	30	719	41	37	78	797
455	Renting of construction or demolition equipment with operator	751	26	777	32	27	59	836
*	Not shown due to either no employees or confidentiality constraints							

Source: NI Census of Employment, DEII, September 2003

NOTES: 1 The Census of Employment is a statutory enquiry of all employers in Northern Ireland, carried out biennially under the Statistics of Trade and Employment (NI) Order 1988.

2 The Census of Employment covers employee jobs only. It excludes: agriculture (but includes animal husbandry service activities and hunting, trapping and game propagation) the self-employed, HM Armed Forces, private domestic servants, homeworkers and trainees without a contract of employment (non-employed status).

3 Persons working 30 hours or less per week are normally regarded as being in part-time employment.

4 The Census of Employment counts the number of jobs rather than the number of persons with jobs. Therefore a person holding both a full-time and a part-time job, or someone with two part-time jobs, will be counted twice.

5 Employees are classified to a Standard Industrial Classification (SIC03) from the business description for each employment unit.

Table 2.3 Northern Ireland Employee Jobs¹ in Construction

Year	Quarter	Employee Jobs - Unadjusted	Quarterly Change - Unadjusted	Employee Jobs - Seasonally Adjusted	Quarterly Change - Seasonally Adjusted
2000	March	34,090	160	34,230	380
	June	34,470	380	34,600	370
	September	35,240	770	35,080	490
	December	35,500	260	35,400	310
2001	March	35,790	290	35,900	510
	June	35,810	30	35,950	40
	September	36,090	280	35,950	10
	December ^(R)	36,680	590	36,590	640
2002	March ^(R)	36,560	-120	36,710	120
	June ^(R)	36,300	-260	36,360	-340
	September ^(R)	36,280	-30	36,160	-200
	December ^(R)	35,870	-410	35,790	-360
2003	March ^(R)	35,400	-460	35,560	-230
	June ^(R)	35,930	530	35,950	380
	September ^(R)	36,010	80	35,900	-50
	December ^(R)	35,360	-650	35,300	-600
2004	March ^(R)	35,430	70	35,600	300
	June ^(R)	35,910	480	35,880	280
	September ^(R)	36,080	180	35,970	90
	December ^(P)	36,400	320	36,350	380

Source: Quarterly Employment Survey (QES), DEII

¹ Figures are rounded to the nearest 10 and may not sum due to rounding.

(P) Provisional; (R) Revised

Figures will be updated 15 June 2005.

Notes:

Estimates of the number of employee jobs are obtained from the Quarterly Employment Survey (QES). The QES covers all public sector bodies, all private sector firms with 25 or more employees and a sample of the remainder. The sample size has been chosen in order that estimates of total employee jobs should be accurate to within +/- 1% of the Census of Employment total. The survey collects information on numbers of persons in full-time and part-time employment. It should be noted that the survey counts the number of jobs rather than the number of persons with jobs. For example, a person holding both a full-time job and a part-time job, or someone with two part-time jobs, will be counted twice.

**Table 2.4 Northern Ireland Labour Force Survey
Self employed in Construction Industry**

Year (Summer)	Number
2004	31,000
2003	30,000
2002	24,000
2001	27,000
2000	22,000

Notes:

Summer quarter comprises June, July and August.

Figures are rounded to the nearest thousand.

Above estimates are subject to sampling error.

Allocation between self employed and employees status is by self assessment.

The above estimates are based on re-weighted LFS estimates, which are in line with 2001

Census of Population results. Revisions to the self-employment series have also taken

place to reflect improvements to the LFS editing procedures, based on the SOC 2000

Occupational Classification, which allow data edits to be removed which previously re-

classified some self-employed as employees.

**Table 2.5 Northern Ireland Annual Survey of Hours and Earnings
Earnings and Hours in the Construction Industry**

full-time male employees, on adult rates, whose pay was not affected by absence
Construction Industry SIC 1992 Division F

At April Each Year	Mean gross weekly earnings Of Which				Percentage of employees who received		
	Total	Overtime Pay	PBR etc	Premium payments	Overtime pay	PBR etc	Premium payments
2001	£351.5	£30.0	x	x	29.6%	10.2%	0.7%
2002	£371.0	£31.3	x	x	30.6%	7.5%	2.6%
2003	£386.9	£25.6	x	x	28.2%	13.6%	1.4%
2004	£403.0	£28.5	x	x	27.3%	8.9%	3.2%
2004**	£405.3	£27.3	x	x	26.0%	8.6%	3.1%

At April Each Year	Distribution of weekly earnings			Mean hourly earnings excluding overtime*	Mean weekly hours	
	10% earned less than	Median 50% earned less than	10% earned more than		Mean total weekly hours (including overtime)	Mean weekly overtime hours
2001	x	x	x	£8.09	42.7	2.9
2002	x	x	x	£8.60	42.4	2.9
2003	£234.5	£349.0	£591.9	£9.12	42.0	2.4
2004	£234.1	£337.2	£575.5	£9.37	42.6	2.6
2004**	£233.1	£339.7	£596.0	£9.46	42.5	2.4

PBR - payment by results, includes piecework, bonuses, commission and incentive payments (includes profit related pay until 1996).

Premium pay - for shift-work, and for night or week-end work where these are not treated as overtime.

x - data unavailable or suppressed

* Average hourly earnings are calculated by dividing the sum of the weekly earnings of the group of employees by the sum of their total weekly hours.

** To improve coverage, supplementary data was collected for the 2004 ASHE survey on businesses not registered for VAT and for people who changed or started new jobs between sample selection and the survey period. These 2004 results include this supplementary information.

**Table 2.6 Northern Ireland Annual Survey of Hours and Earnings
Earnings in the Construction Industry by Occupation**

full time male employees, on adult rates, whose pay was not affected by absence

At April Each Year	SOC 531 - Construction trades		SOC 5315 - carpenters and joiners		SOC 912 - elementary construction occupations	
	Average gross weekly earnings	Average hourly earnings excluding overtime	Average gross weekly earnings	Average hourly earnings excluding overtime	Average gross weekly earnings	Average hourly earnings excluding overtime
2001	£316.7	£7.45	£320.0	£7.72	£244.1	£5.62
2002	£319.8	£7.43	£312.7	£7.33	£275.2	£5.83
2003	£367.6	£8.28	£334.3	£7.59	£274.9	£6.19
2004	£350.6	£8.12	£351.1	£7.72	£335.9	£7.49
2004**	£351.8	£8.15	£351.9	£7.73	£331.2	£7.42

SOC - Standard Occupational Classification 2000

** To improve coverage, supplementary data was collected for the 2004 ASHE survey on businesses not registered for VAT and for people who changed or started new jobs between sample selection and the survey period. These 2004 results include this supplementary information.

**Table 2.7 Northern Ireland Annual Survey of Hours and Earnings
Earnings and Hours in the Construction Industry and in all Industries and Services**

full time male employees, on adult rates, whose pay was not affected by absence
Construction Industry SIC 1992 Division F (from 2002 SIC 2003)

At April Each Year	FULL-TIME MALES					
	CONSTRUCTION INDUSTRY			ALL INDUSTRIES AND SERVICES		
	Mean gross weekly earnings	Mean hourly earning excluding overtime	Mean total weekly hours (including overtime)	Mean gross weekly earnings	Mean hourly earning excluding overtime	Mean total weekly hours (including overtime)
2000	£345.3	£7.76	43.6	£403.6	£9.70	41.3
2001	£351.5	£8.09	42.7	£418.9	£10.13	41.2
2002	£371.0	£8.60	42.4	£431.9	£10.44	41.1
2003	£386.9	£9.12	42.0	£447.7	£10.91	40.7
2004	£403.0	£9.37	42.6	£466.3	£11.23	41.1
2004**	£405.3	£9.46	42.5	£464.2	£11.19	41.1

** To improve coverage, supplementary data was collected for the 2004 ASHE survey on businesses not registered for VAT and for people who changed or started new jobs between sample selection and the survey period. These 2004 results include this supplementary information.

Table 2.8 Statistics of accidents reported to HSENI 2000/01 – 2003/04**Table 2.8.1. All accidents fatal, major injury and over 3 day**

Year	Fatal	Major	Over 3 Day	Total
2000/01	12	578	3,421	4,011
2001/02	9	595	3,547	4,151
2002/03	21	650	3,039	3,710
2003/04 ^(P)	19	675	2,623	3,317
01/04/04 - 31/12/04 ^(P)	12	458	1,668	2,138

Table 2.8.2. All accidents by industrial sector

Year	Agric	Constr	Mfg&Q ¹	Educ	Health	Other	Total
2000/01	72	245	1,259	380	498	1,557	4,011
2001/02	57	236	1,195	392	467	1,804	4,151
2002/03	54	212	1,030	481	505	1,428	3,710
2003/04 ^(P)	42	249	963	342	450	1,271	3,317
01/04/04 - 31/12/04 ^(P)	28	198	613	214	337	748	2,138

Table 2.8.3. Major accidents by industrial sector

Year	Agric ²	Constr	Mfg & Q	Educ	Health	Other	Total
2000/01	N/A	68	122	206	52	130	578
2001/02	N/A	55	147	199	58	136	595
2002/03	N/A	60	116	293	58	123	650
2003/04 ^(P)	N/A	81	148	176	86	184	675
01/04/04 - 31/12/04 ^(P)	N/A	80	101	105	73	99	458

Table 2.8.4. Fatal accident incidence rates per 100,000 workers by industrial sector

Year	Agriculture	Construction	Manufacturing	All Industries
2000/01	19.16	8.5	1.91	0.94
2001/02	13.69	11.4	1.01	0.93
2002/03	12.4	12.7	1	2.6
2003/04	19.2	10.2	0	2.3

¹ Mfg & Q: Manufacturing and Quarries.

² Non-fatal Agriculture accidents are not classified as "major" and "over 3 day", but simply as "non-fatal".

(P) -provisional figures

Table 2.8.5. Construction sector cause of accident by type of accident

Cause	2000/01			2001/02		
	Fatal	Major	Over 3 day	Fatal	Major	Over 3 day
Fall	3	39	38	0	24	36
Struck by	0	8	35	1	7	35
Handling, strains/sprains	0	5	35	0	1	35
Slip or trip	0	2	21	0	4	24
Vehicle	0	5	6	0	1	4
Collapsing or overturning	0	2	2	1	2	3
Others	0	7	37	2	16	34
Totals	3	68	174	4	55	171

Cause	2002/03			2003/04(p)		
	Fatal	Major	Over 3 day	Fatal	Major	Over 3 day
Fall	5	29	20	3	28	34
Struck by	0	6	27	0	16	27
Handling, strains/sprains	0	2	31	0	3	41
Slip or trip	0	7	30	0	18	27
Vehicle	0	3	4	0	1	3
Collapsing or overturning	2	1	5	3	2	2
Others	2	12	26	0	13	28
Totals	9	60	143	6	81	162

Cause	1/4/04 - 31/12/04(p)		
	Fatal	Major	Over 3 day
Fall	1	25	17
Struck by		15	17
Handling, strains/sprains		7	40
Slip or trip		17	16
Vehicle		1	2
Collapsing or overturning			2
Others		25	23
Totals	1	80	117

(p) provisional figures

Table 2.8.6 Construction sector – description of fatal accidents

Year	Number of Fatalities	Occupation	Employment Category	Description	Date
2000/01	3	Plumber	Self-employed	Fell 13m from landing.	28/04/2000
		Labourer	Employee	Fell from scaffolding.	25/09/2000 (Died 04/10/2000)
		Demolition worker	Employee	Fell through opening in floor of industrial premises.	16/11/2000
2001/02	4	Joiner	Employee	Crushed under bale of reinforced mesh that fell 8m during lifting	21/06/2001
		Electrician	Self-employed	Electrocuted while rewiring a	19/11/2001
		Builder	Self-employed	Crushed when entangled between slewing ring and digger tracks.	04/12/2001
		Worker	Employee	Electrocuted when boom of excavator came in contact with 33kv overhead power lines.	15/12/2001
2002/03	8 +1 child	Painter	Employee	Electrocuted while working from MEWP when it came into contact with overhead power line.	08/05/2002
		Child (boy aged 5 yrs)	Member of the public	Trapped in 225mm diameter sewer pipe.	01/06/2002
		Roofer	Self-employed	Fell from roof while carrying out minor repairs.	19/07/2002
		Labourer	Self-employed	Crushed underneath staircase that collapsed.	03/09/2002
		Labourer	Employee	Fell following collapse of 8 staircases during placing of the	03/09/2002
		Businessman	Self-employed	Crushed under wall knocked over by arm of excavator.	18/11/2002
		Joiner	Employee	Fell 3.6m from cage mounted on telescopic handler; cage also fell onto the deceased.	03/12/2002
		Mastic asphaltter	Employee	Slipped on hip roof and fell underneath middle guard rail and	21/01/2003 (Died 23/01/2003)
		Builder	Self-employed	Fell 13.5m from extension ladder mounted on top of tower scaffold.	07/02/2003
2003/04	6	Joiner	Employee	Fell 2.8m through an opening in the floor of a timber framed house	14/05/2003 (Died 16/05/2003)
		Sub-contractor	Self-employed	Crush in a trench collapse	30/08/2003
		Mushroom Picker	Employee	Crushed under an overturned excavator	23/10/03
		Labourer		Fell from a ladder	17/11/03
		Digger driver	Self-employed	Crushed under a wall collapse during demolition	10/12/2003 (Died 21/02/2004)
		Builder	Self-employed	Fell approx 7m off a roof	04/03/04
		2004/05	1	Joiner	Employed

Survey Response for QCE

For the quarter 1 October to 31 December 2004, 86% of contracting firms in the sample participated in the survey. A breakdown of response by stratum is highlighted below. Construction firms are stratified according to annual turnover, ranging from the small stratum one firms with an annual turnover of less than £100,000 through to the large stratum six firms which have an annual turnover in excess of £10 million.

As can be seen from the table, there was a higher co-operation in the survey from larger firms and lower response from firms belonging to stratum 1 and stratum 2. Each quarter, there is ongoing effort to improve overall response.

2004 Oct- Dec	Stratum	Annual Turnover (£ '000)	Response (%)
	1	0 - 99	61
	2	100 - 499	75
	3	500 - 1,999	91
	4	2,000 - 4,999	87
	5	5,000 - 9,999	92
	6	10,000+	88
	Overall		86

Notes to Editors

1. Statistics derived from the QCE are based on returns made by Construction Firms and Public Sector Direct Labour Departments.
2. The sample of firms in the QCE includes only VAT registered firms in Standard Industrial Classification Division 45 (Construction) on the Inter Departmental Business Register (IDBR).
3. Construction activity measured by QCE includes general construction and demolition work, construction and repair of buildings, civil engineering, installation of fixtures and fittings and any other building completion work.
4. The following definitions are used in the QCE to describe Construction Activity:

New Work is any new construction activity e.g. factory and office extensions, major re-construction, major alterations, site preparation and demolition.

Repair and Maintenance is all on-site work not defined as new construction, e.g. housing conversions, extensions and improvements.

Housing refers to all housing construction activity, both private and public sector.

Infrastructure refers to any work on roads and car parks, water and sewerage, electricity, gas, communications, air transport, railways, harbours and waterways.

Other Work refers to factories, warehouses, oil, steel gas and coal, schools and colleges, offices and banks, shops, universities, entertainment, agriculture, health and welfare, garages and miscellaneous.

5. The base year for all the series published is 2000 (2000 = 100).
6. Tables 1.1, 1.2, 1.3, 1.4, 1.5, 1.6, 1.7, 1.8 (b) are all seasonally adjusted. Seasonal adjustment aids interpretation by removing seasonal variation. The data is seasonally adjusted using X11 ARIMA software.
7. Figures may not always tally due to rounding and seasonal adjustment.

8. Results, particularly for the latest quarter, are provisional and subject to revision as fuller information becomes available.

The time series contained within Chapter 1-Output are updated quarterly to take account of:

- Firms not returning forms on schedule;
- Validation of data;
- Changes to Grossing Factors;
- Changes to the Seasonal Adjusters;

9. The QCE is a sample survey, the results of which are subject to both sampling and non-sampling error.

For further information please contact Ms Amanda Filmer:

Telephone (028) 9034 8252 E-mail amanda.filmer@dfpni.gov.uk

Fax (028) 9034 8205

Electronic and hard copies of this bulletin are available from:

Central Survey Unit
Northern Ireland Statistics and Research Agency
McAuley House
2 - 14 Castle Street
BELFAST
BT1 1SY

Or on the Central Survey Unit Website at <http://www.csu.nisra.gov.uk>