

Northern Ireland Construction Bulletin 1st January to 31st March 2009

6th August 2009



Commerce, Energy and Industry

STATISTICAL BULLETIN

Contents

	Page
Introduction.....	3
Key Findings.....	3
Chapter 1 Output	4
1.1 Index of Construction.....	4
1.2 Index of New Work.....	5
1.3 Index of Repair & Maintenance.....	6
1.4 Index of Housing.....	7
1.5 Index of Infrastructure.....	8
1.6 Index of Other Work.....	9
1.7 Value of Construction Output.....	10
1.8(a) Output (Current Prices).....	11
1.8(b) Output (Constant Prices and Seasonally adjusted).....	12
1.9 Private Contractors: Value of Work Done By Stratum.....	13
1.10 Contractors Output (New Work only) by Type of Work.....	14
Chapter 2 The Structure of the Industry.....	15
2.1 Structure of the Construction Industry.....	15
2.2 Northern Ireland Census of Employment.....	16
2.3 Northern Ireland Employee Jobs in Construction.....	17
2.4 Northern Ireland Labour Force Survey.....	18
2.5 Northern Ireland Annual Survey of Hours and Earnings Earnings and Hours in the Construction Industry.....	19
2.6 Northern Ireland Annual Survey of Hours and Earnings Earnings in the Construction Industry by Occupation..	20
2.7 Northern Ireland Annual Survey of Hours and Earnings Earnings and Hours in the Construction Industry and in all Industries and Services.....	21
2.8 Statistics of accidents reported to HSENI 1997/98-2007/08.....	22
Survey Response.....	27
Notes to Editors.....	28

Northern Ireland Construction Bulletin

1st January to 31st March 2009

Introduction

The Northern Ireland Construction Bulletin is produced by the Central Survey Unit of the Northern Ireland Statistics and Research Agency, on behalf of the Department of Finance and Personnel.

The Bulletin contains information on the value of Construction Output in Northern Ireland. These figures are derived from the Northern Ireland Quarterly Construction Enquiry (QCE). This is a statutory survey of construction firms operating in Northern Ireland. Each quarter a sample of construction firms are asked to provide details of the value of construction activity they have undertaken in a specified period. The QCE principally produces the Index of Construction, which is an estimate of the volume of construction output. It is an important economic indicator, which contributes to the calculation of UK GDP.

Additional information on the Northern Ireland Construction Industry is also contained in the Bulletin. This information is provided by the Statistics Research Branch of the Department of Enterprise, Trade and Investment and the Health and Safety Executive Northern Ireland (from a variety of survey sources).

Key Findings

- The provisional seasonally adjusted Index of Construction for the period 1st January to 31st March 2009 was 96.4, down 1.8 points on the previous quarter (98.2), and down 5.4 points on the corresponding quarter in 2008 (101.8). An overall downward trend in construction output has been evident since the second quarter of 2007.(Table 1.1)
- The estimated seasonally adjusted value of construction output (at 2005 prices) was £707 million, a decrease of 1.8% (£13 million) on the previous quarter (£720 million) and a decrease of 5.2% on the corresponding quarter in 2008 (£746 million) (Table 1.7)

Readers are reminded:

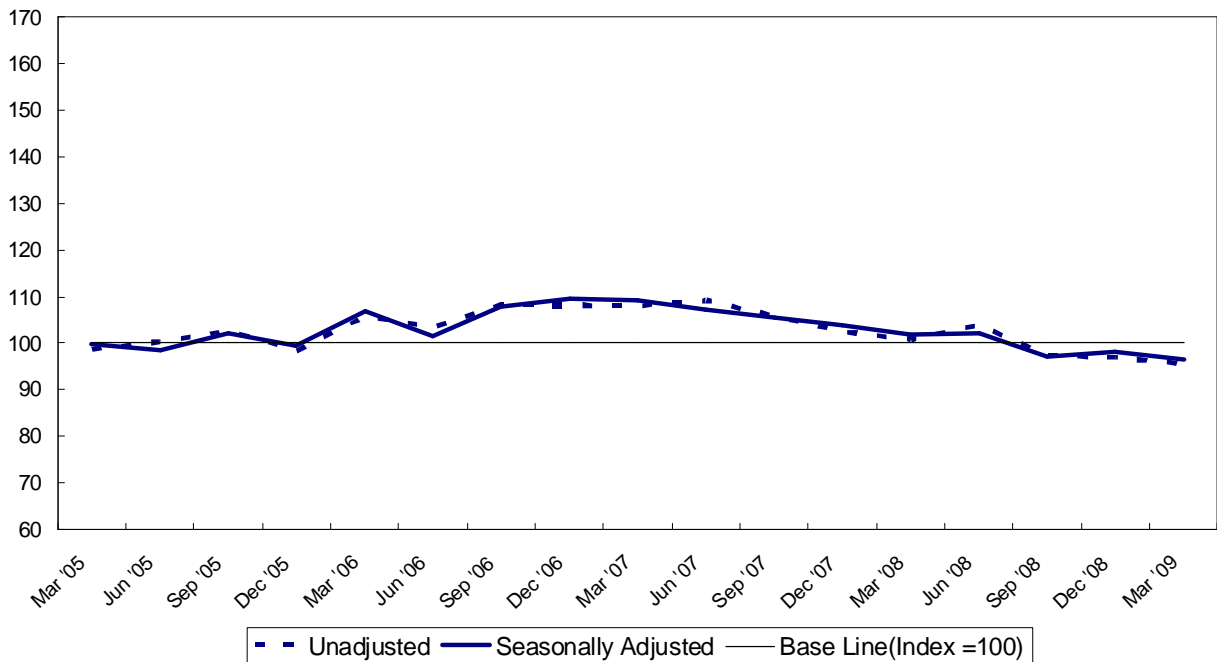
- The figures reported above are based on returns from construction firms for the period 1st January to 31st March 2009;
- Results, particularly for the latest quarter are provisional and subject to revision, as fuller information becomes available from subsequent returns in future quarters.

Chapter 1 Output

Figures are provisional and subject to revisions to take account of the most recent information and more up-to-date seasonal factors (see Notes to Editor)

Year / Quarter			Index 2005=100	
			Unadjusted	Seasonally Adjusted
2005	Jan - Mar	98.6	99.8	
	Apr - Jun	100.4	98.4	
	Jul - Sep	102.7	102.3	
	Oct - Dec	98.4	99.6	
2006	Jan - Mar	105.8	107.0	
	Apr - Jun	103.5	101.5	
	Jul - Sep	108.3	107.9	
	Oct - Dec	108.2	109.6	
2007	Jan - Mar	108.0	109.2	
	Apr - Jun	109.2	107.1	
	Jul - Sep	105.8	105.4	
	Oct - Dec	102.5	103.8	
2008	Jan - Mar	100.8	101.8	
	Apr - Jun	104.0	102.1	
	Jul - Sep	97.4	97.1	
	Oct - Dec	96.9	98.2	
2009	Jan - Mar	95.5	96.4	

Figure 1.1 Index of Construction
Quarters ending March 2005 to March 2009

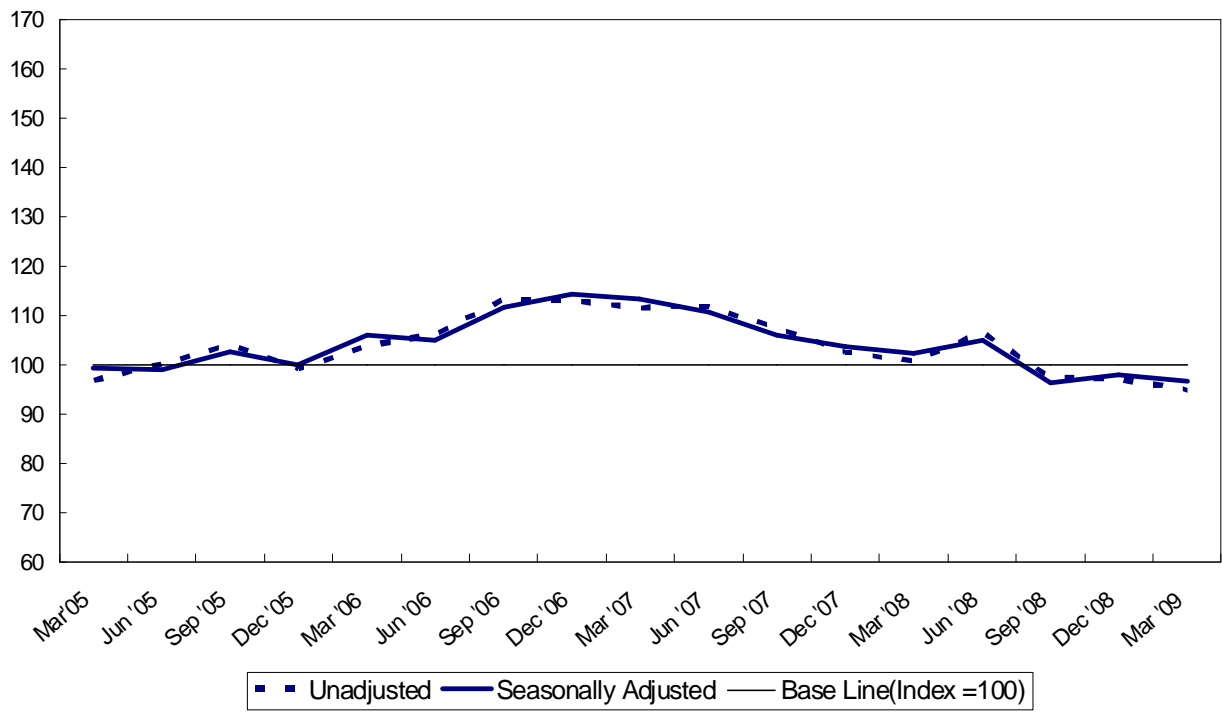


Figures are provisional and subject to revisions to take account of the most recent information and more up-to-date seasonal factors (see Notes to Editor)

Table 1.2 Index of New Work ¹			Index 2005=100	
Year / Quarter			Unadjusted	Seasonally Adjusted
2005	Jan - Mar		96.8	99.2
	Apr - Jun		100.1	98.8
	Jul - Sep		104.0	102.5
	Oct - Dec		99.1	99.8
2006	Jan - Mar		103.8	105.8
	Apr - Jun		106.1	104.8
	Jul - Sep		113.2	111.5
	Oct - Dec		113.0	114.1
2007	Jan - Mar		111.5	113.4
	Apr - Jun		111.8	110.4
	Jul - Sep		107.4	105.9
	Oct - Dec		102.5	103.6
2008	Jan - Mar		100.6	102.3
	Apr - Jun		106.5	104.8
	Jul - Sep		97.4	96.4
	Oct - Dec		97.0	98.0
2009	Jan - Mar		94.8	96.5

¹ New work relates to new construction including housing, factory and office extensions, major reconstruction, major alteration, site preparation and demolition

Figure 1.2 Index of New Work
Quarters ending March 2005 to March 2009

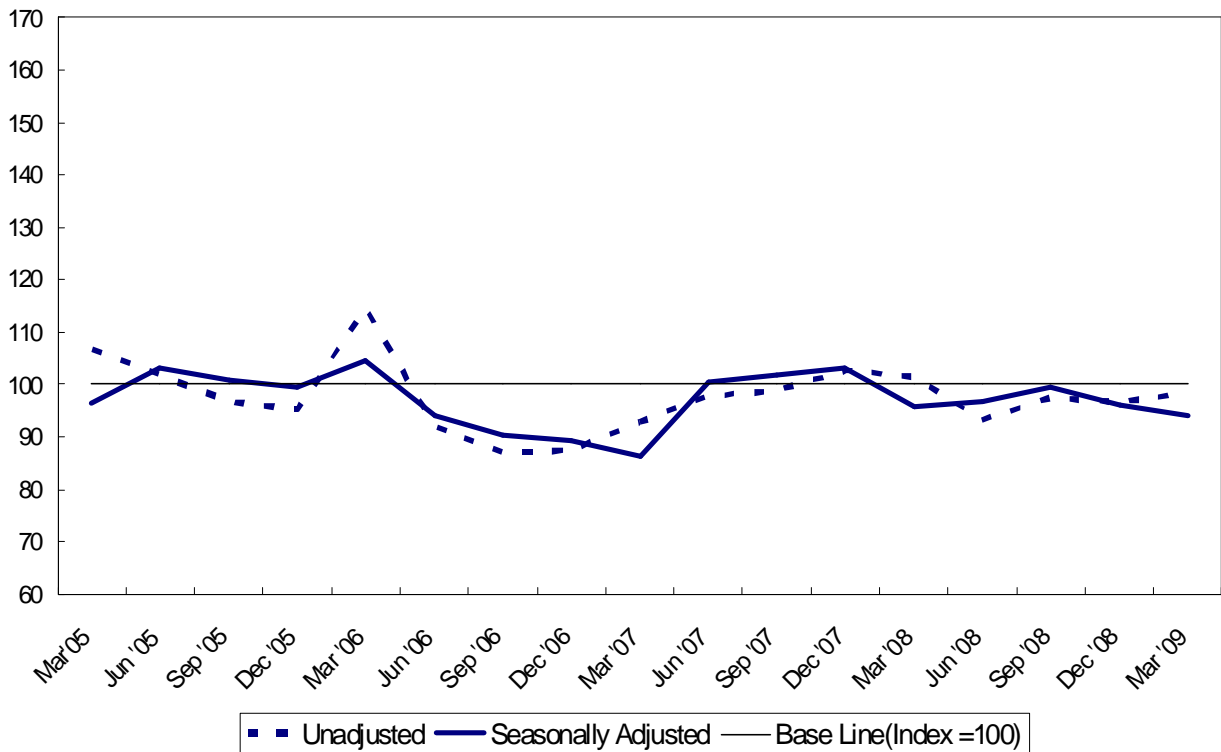


Figures are provisional and subject to revisions to take account of the most recent information and more up-to-date seasonal factors (see Notes to Editor)

Table 1.3 Index of Repair and Maintenance¹			Index 2005=100	
Year / Quarter			Unadjusted	Seasonally Adjusted
2005	Jan - Mar		106.7	96.3
	Apr - Jun		101.7	103.1
	Jul - Sep		96.8	100.7
	Oct - Dec		95.2	99.5
2006	Jan - Mar		114.6	104.6
	Apr - Jun		92.2	94.0
	Jul - Sep		87.0	90.5
	Oct - Dec		87.4	89.4
2007	Jan - Mar		92.8	86.1
	Apr - Jun		97.7	100.6
	Jul - Sep		98.8	101.9
	Oct - Dec		102.7	103.2
2008	Jan - Mar		101.5	95.7
	Apr - Jun		93.2	96.8
	Jul - Sep		97.5	99.4
	Oct - Dec		96.6	96.2
2009	Jan - Mar		98.5	94.0

¹ Repair & Maintenance includes all on-site work not defined as new construction.

Figure 1.3 Index of Repair and Maintenance
Quarters ending March 2005 to March 2009

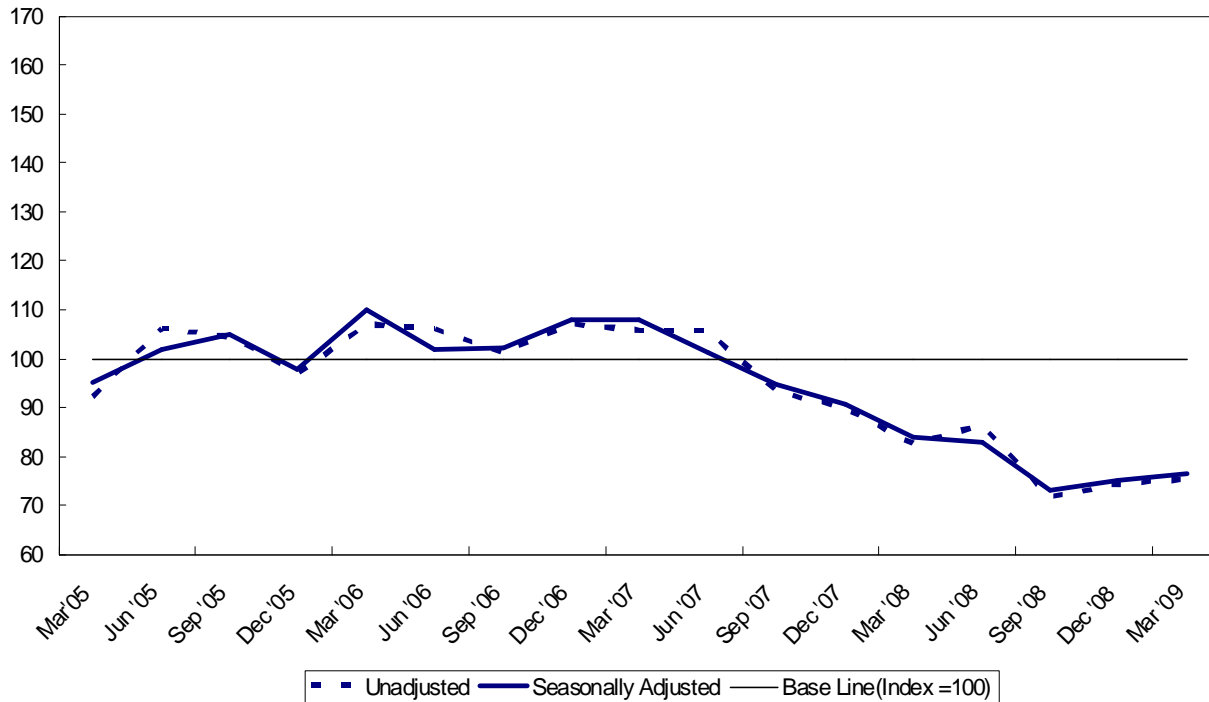


Figures are provisional and subject to revisions to take account of the most recent information and more up-to-date seasonal factors (see Notes to Editor)

Table 1.4 Index of Housing ¹			Index 2005=100	
Year / Quarter		Unadjusted	Seasonally Adjusted	
2005	Jan - Mar	92.2	95.2	
	Apr - Jun	106.1	102.0	
	Jul - Sep	104.6	105.0	
	Oct - Dec	97.1	97.7	
2006	Jan - Mar	107.1	110.1	
	Apr - Jun	106.2	101.9	
	Jul - Sep	101.2	102.4	
	Oct - Dec	107.2	107.9	
2007	Jan - Mar	105.8	108.1	
	Apr - Jun	105.6	101.3	
	Jul - Sep	93.3	94.9	
	Oct - Dec	89.9	90.6	
2008	Jan - Mar	82.6	84.0	
	Apr - Jun	86.4	82.8	
	Jul - Sep	71.7	73.2	
	Oct - Dec	74.4	75.0	
2009	Jan - Mar	75.4	76.4	

¹ Housing relates to all housing construction activity, both private and public sector.

Figure 1.4 Index of Housing
Quarters Ending March 2005 to March 2009



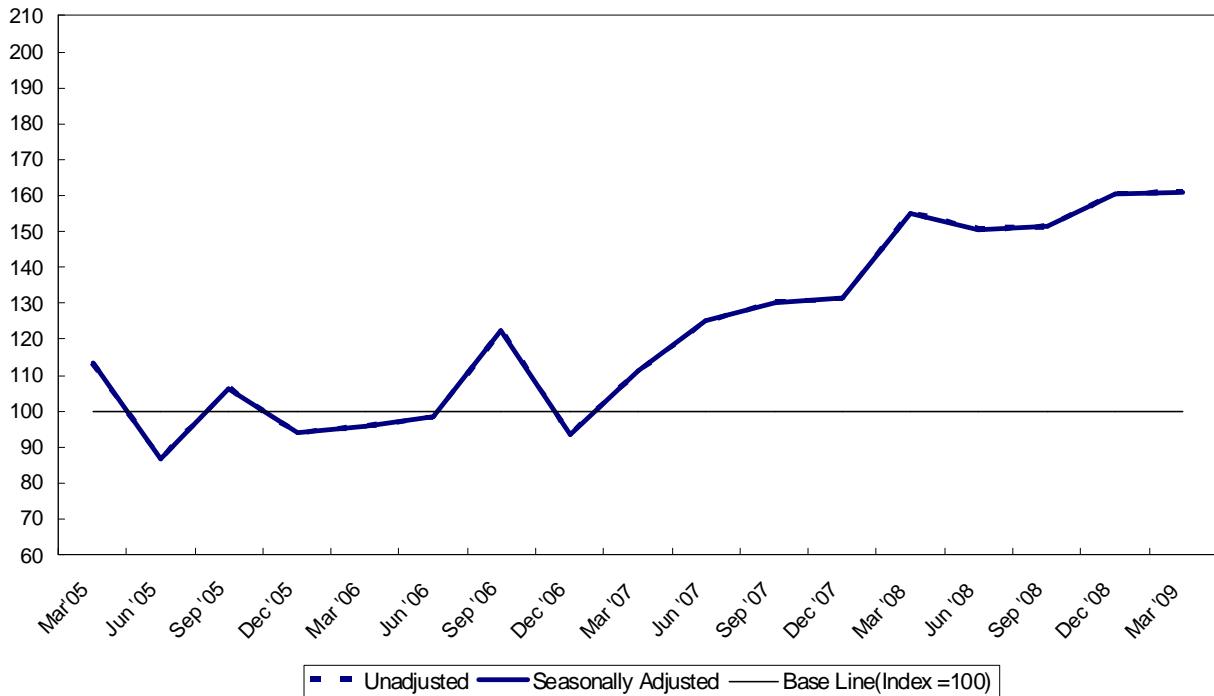
Figures are provisional and subject to revisions to take account of the most recent information and more up-to-date seasonal factors (see Notes to Editor)

Table 1.5 Index of Infrastructure ¹		
Index 2005=100		
Year / Quarter		Unadjusted ²
2005	Jan - Mar	113.3
	Apr - Jun	86.8
	Jul - Sep	106.4
	Oct - Dec	93.9
2006	Jan - Mar	95.8
	Apr - Jun	98.4
	Jul - Sep	122.5
	Oct - Dec	93.6
2007	Jan - Mar	111.0
	Apr - Jun	125.1
	Jul - Sep	130.2
	Oct - Dec	131.3
2008	Jan - Mar	155.2
	Apr - Jun	150.7
	Jul - Sep	151.4
	Oct - Dec	160.5
2009	Jan - Mar	161.1

¹ Infrastructure includes work on roads and car parks, water and sewerage, electricity, gas, communication, air transport, railways, harbours and waterways

² The seasonally adjusted figures are equal to the unadjusted figures because this series was not found to be a candidate for seasonal adjustment

Figure 1.5 Index of Infrastructure
Quarters Ending March 2005 to March 2009



Figures are provisional and subject to revisions to take account of the most recent information and more up-to-date seasonal factors (see Notes to Editor)

Table 1.6 Index of Other Work ¹		
Index 2005=100		
		Unadjusted ²
2005	Jan - Mar	102.1
	Apr - Jun	97.4
	Jul - Sep	98.8
	Oct - Dec	101.7
2006	Jan - Mar	107.6
	Apr - Jun	101.6
	Jul - Sep	112.8
	Oct - Dec	114.9
2007	Jan - Mar	110.1
	Apr - Jun	108.4
	Jul - Sep	114.1
	Oct - Dec	109.4
2008	Jan - Mar	106.2
	Apr - Jun	111.3
	Jul - Sep	113.2
	Oct - Dec	105.0
2009	Jan - Mar	99.5

¹Other work includes factories, warehouse, oil, steel, gas and coal, school, colleges, offices, banks, shops, universities, entertainment, agriculture, health, welfare, garages and miscellaneous.

² The seasonally adjusted figures are equal to the unadjusted figures because this series was not found to be a candidate for seasonal adjustment

Figure 1.6 Index of Other Work
Quarters Ending March 2005 to March 2009

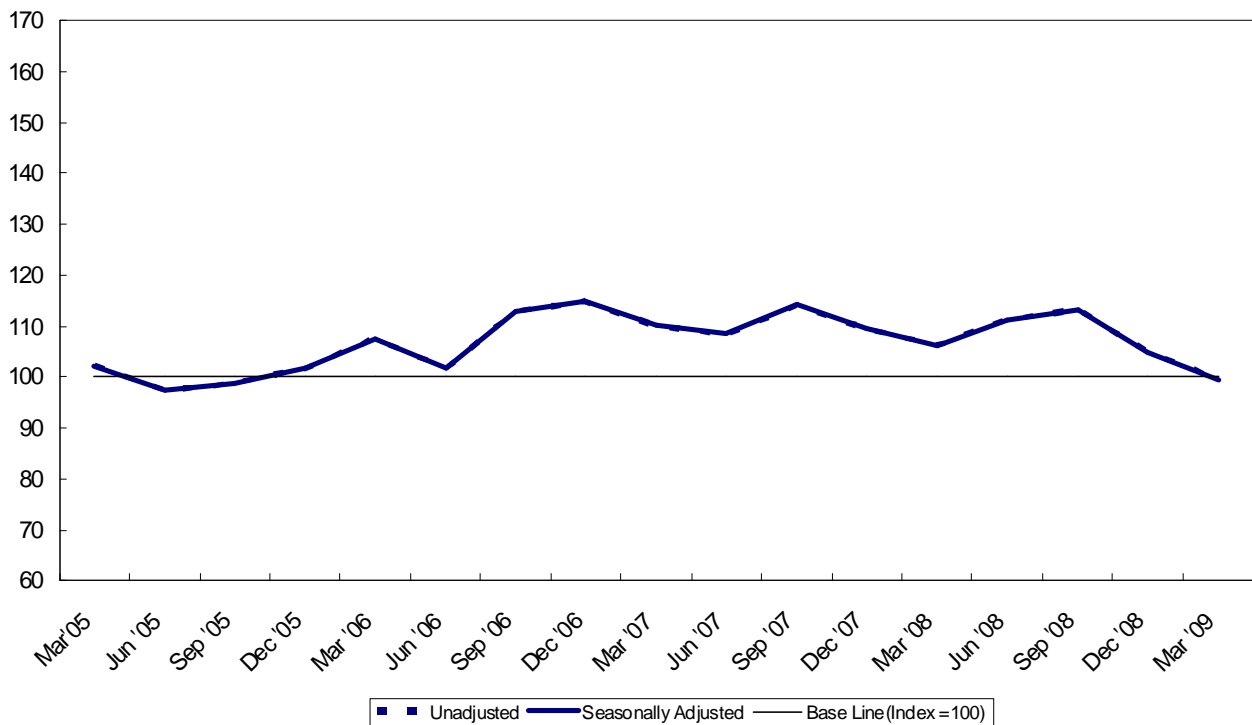
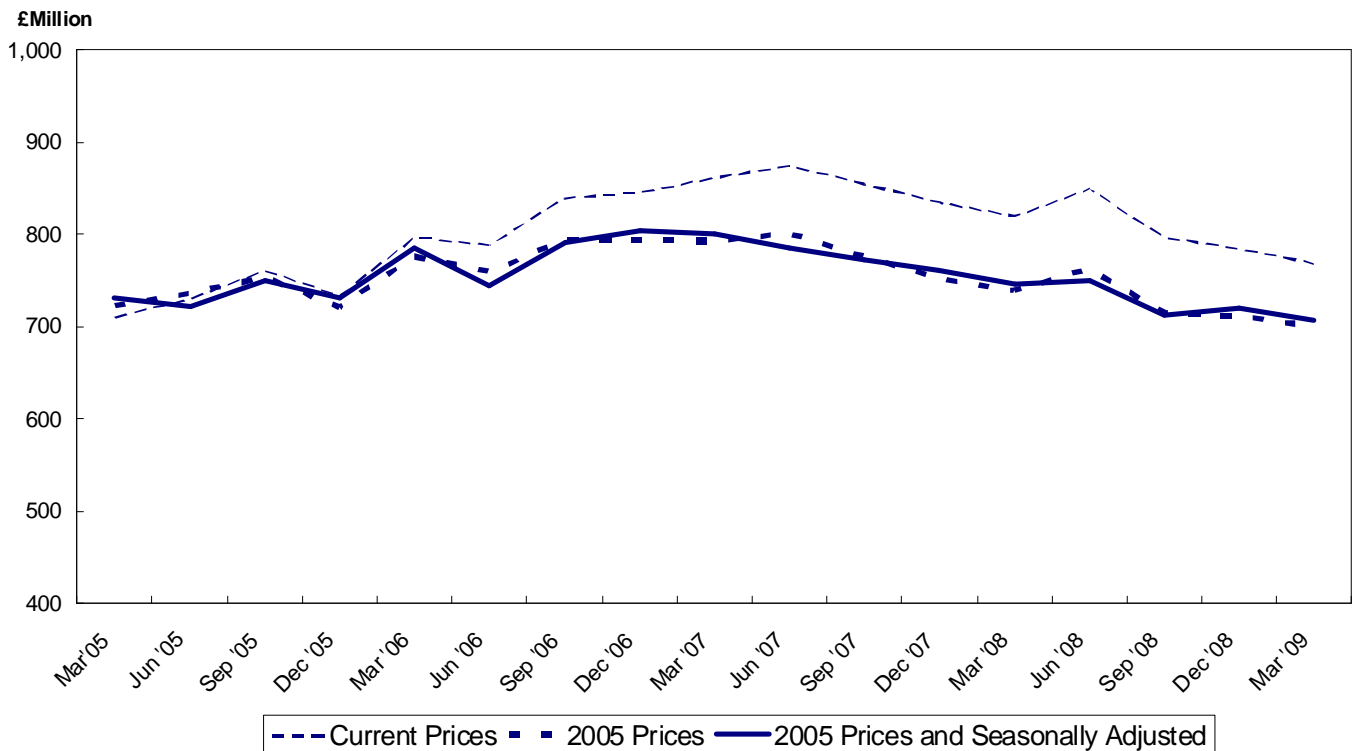


Table 1.7 Value of Construction Output

Figures are provisional and subject to revisions to take account of the most recent information and more up-to-date seasonal factors (see Notes to Editor)

Year / Quarter	Current prices (£ Million)	2005 prices (£ Million)	2005 prices and Seasonally Adjusted (£ Million)
2005 Jan - Mar	710	723	732
Apr - Jun	730	736	721
Jul - Sep	761	753	750
Oct - Dec	733	721	731
Total	2,934	2,934	2,934
2006 Jan - Mar	797	776	785
Apr - Jun	788	759	744
Jul - Sep	839	794	791
Oct - Dec	845	794	804
Total	3,268	3,123	3,123
2007 Jan - Mar	861	792	801
Apr - Jun	874	801	786
Jul - Sep	854	776	773
Oct - Dec	834	752	762
Total	3,424	3,119	3,119
2008 Jan - Mar	820	739	746
Apr - Jun	849	763	749
Jul - Sep	797	715	712
Oct - Dec	784	711	720
Total	3,249	2,930	2,930
2009 Jan - Mar	768	701	707

Figure 1.7 Value of Construction Output
Quarters Ending March 2005 to March 2009



Figures are provisional and subject to revisions to take account of the most recent information and more up-to-date seasonal factors (see Notes to Editor)

Table 1.8 (a) Output¹															
Current Prices (£ million)															
YEAR/ QUARTER		New housing		Other New Work non-housing				All New Work	Repair and Maintenance						All Work
				Infra - structure	Other New Work exc infrastructure				Housing		Other Work			All Repair & maintenance	
		Public	Private		Public	Private Industrial	Private Commercial		Public	Private	Infra - structure	Public	Private		
2005	Jan - Mar	34.0	247.8	78.4	109.1	18.7	79.5	567.5	36.9	15.2	27.3	43.3	19.8	142.5	710.0
	Apr - Jun	35.8	291.9	57.6	96.6	19.2	92.2	593.1	35.6	23.7	25.1	30.4	21.8	136.6	729.7
	Jul - Sep	38.9	298.8	74.0	105.5	11.2	97.1	625.5	26.5	23.9	30.5	27.5	26.7	135.1	760.6
	Oct - Dec	51.2	259.6	69.1	88.2	15.8	116.3	600.1	28.7	23.9	25.1	27.7	28.0	133.3	733.5
2006	Jan - Mar	48.1	292.2	72.7	90.6	16.8	114.4	634.7	32.1	34.5	24.0	39.5	31.9	162.1	796.8
	Apr - Jun	51.7	295.2	81.2	85.1	15.1	127.7	656.1	33.6	26.0	21.5	26.0	24.7	131.8	787.9
	Jul - Sep	47.8	292.8	111.6	97.4	23.6	137.5	710.6	21.2	31.0	19.4	33.6	23.1	128.3	838.9
	Oct - Dec	60.6	305.6	81.1	106.5	28.3	132.2	714.2	27.6	26.9	18.9	21.1	35.9	130.5	844.7
2007	Jan - Mar	49.3	314.7	93.0	116.8	20.2	127.3	721.3	25.5	34.8	29.2	31.3	18.9	139.8	861.1
	Apr - Jun	48.7	310.0	106.4	107.5	15.3	137.9	725.7	32.4	34.4	29.0	24.1	28.5	148.4	874.1
	Jul - Sep	41.8	278.6	109.7	105.5	23.6	140.8	699.9	27.9	29.3	31.5	40.7	24.9	154.4	854.4
	Oct - Dec	38.4	270.1	111.4	102.1	17.5	134.1	673.6	34.8	23.6	30.4	35.3	36.6	160.6	834.2
2008	Jan - Mar	36.2	240.2	133.1	111.3	16.1	123.4	660.4	24.9	39.9	31.2	31.8	31.4	159.2	819.5
	Apr - Jun	51.5	244.5	131.1	108.7	21.2	143.6	700.7	25.8	38.5	27.9	24.8	31.2	148.1	848.8
	Jul - Sep	44.5	188.2	129.4	108.9	35.8	129.0	635.8	28.3	35.4	33.5	26.9	36.9	160.9	796.7
	Oct - Dec	56.9	166.9	143.4	113.0	32.8	111.4	624.3	32.1	41.8	28.8	25.1	32.1	159.9	784.3
2009	Jan - Mar	60.7	169.0	140.5	122.1	12.3	101.5	606.1	29.6	34.0	31.8	27.7	39.1	162.2	768.3

¹Includes output by contractors and public sector direct labour departments

Figures are provisional and subject to revisions to take account of the most recent information and more up-to-date seasonal factors (see Notes to Editor)

Table 1.8 (b) Output¹														
Constant (2005) Prices and Seasonally Adjusted (£ million)														
YEAR/ QUARTER	New housing		Other New Work non-housing				All New Work ²	Repair and Maintenance					All Repair & Maintenance ²	All Work ²
	Public	Private	Infra - structure	Other New Work exc infrastructure				Housing		Other Work				
	Public	Private	Infra - structure	Public	Private Industrial	Private Commercial		Public	Private	Infra - structure	Public	Private		
2005 Jan - Mar	35.0	262.3	81.6	110.9	18.2	86.8	591.6	35.4	13.8	26.1	35.5	20.3	131.8	732.0
Apr - Jun	35.8	283.0	58.3	96.5	17.4	88.7	589.1	32.9	24.2	25.6	36.7	22.2	141.1	721.5
Jul - Sep	38.7	294.1	73.1	104.1	14.7	94.2	611.7	30.2	23.7	29.0	27.2	26.2	137.9	750.0
Oct - Dec	49.9	259.0	66.4	88.0	15.2	114.9	595.3	29.7	27.0	27.3	28.7	27.3	136.2	730.9
2006 Jan - Mar	46.7	293.0	69.5	91.0	15.8	121.4	631.3	28.5	29.3	21.6	31.5	30.9	143.1	784.6
Apr - Jun	50.2	271.4	74.6	84.0	18.5	120.9	625.3	28.8	24.7	20.6	30.1	23.6	128.7	744.2
Jul - Sep	45.3	279.2	100.5	93.3	18.8	129.9	665.2	24.1	29.3	17.5	30.4	21.4	123.8	791.2
Oct - Dec	55.9	292.9	73.2	100.9	22.5	128.2	680.8	22.9	28.8	19.4	20.1	32.9	122.3	803.9
2007 Jan - Mar	44.6	297.5	80.7	108.2	25.4	131.9	676.4	25.1	27.5	24.8	24.3	17.2	117.9	800.8
Apr - Jun	43.5	272.1	94.8	96.3	18.4	127.7	658.7	28.0	30.5	26.3	26.6	25.6	137.7	785.7
Jul - Sep	37.3	258.6	98.3	92.1	18.1	129.9	632.0	26.2	26.3	26.9	33.7	21.8	139.4	772.9
Oct - Dec	33.8	250.5	100.4	87.3	13.7	127.8	617.8	28.1	24.0	29.5	31.7	32.0	141.3	761.6
2008 Jan - Mar	31.5	219.4	122.9	96.1	20.0	127.7	610.4	23.4	30.4	25.4	24.4	27.3	130.9	746.5
Apr - Jun	44.5	208.0	121.6	94.3	24.8	131.6	625.3	21.3	32.3	24.3	26.5	26.8	132.5	748.9
Jul - Sep	39.1	175.0	118.7	94.0	26.8	119.4	574.8	25.2	30.2	27.1	20.5	30.6	136.0	712.0
Oct - Dec	51.7	164.2	131.4	97.0	25.6	107.8	584.9	24.1	40.3	26.3	21.1	26.5	131.6	720.0
2009 Jan - Mar	56.4	169.8	129.3	104.3	15.0	103.4	576.0	26.2	24.7	24.7	20.6	32.5	128.7	707.3

¹Includes output by contractors and public sector direct labour departments

²See notes to Editor (Paragraph 7)

Figures are provisional and subject to revisions to take account of the most recent information and more up-to-date seasonal factors (see Notes to Editor)

Table 1.9 Output¹ (Private Contractors only) by Stratum² of Firm															
Current Prices (£million)															
1st Quarter 2009															
Stratum of Firm	Annual Turnover (£'000)	New housing		Other New Work non-housing				All New Work	Repair and Maintenance						All Work
		Public	Private	Infra - structure	Other New Work exc infrastructure				Housing		Other Work			All Repair & maintenance	
					Public	Private Industrial	Private Commercial		Public	Private	Infra - structure	Public	Private		
1	0-124	0.0	6.4	0.0	0.0	0.0	5.6	12.0	2.8	8.9	0.0	0.0	10.3	22.1	34.1
2	125-549	2.5	28.2	7.0	1.0	0.2	5.2	44.0	4.5	13.8	1.7	2.6	4.7	27.2	71.3
3	550-2,099	5.0	26.7	12.4	4.8	0.0	10.3	59.2	7.1	10.4	5.1	7.4	17.0	47.1	106.3
4	2,100-5,249	20.0	35.7	1.8	6.9	6.2	19.2	89.6	10.4	0.5	0.2	2.5	1.6	15.1	104.8
5	5,250-10,499	18.3	16.6	13.1	8.1	0.2	13.0	69.2	1.9	0.2	5.5	2.3	2.5	12.4	81.6
6	10,500+	15.0	55.5	106.3	89.9	5.6	48.1	320.4	1.5	0.3	5.6	0.6	2.9	10.8	331.2
Total		60.7	169.0	140.4	110.6	12.3	101.5	594.6	28.2	34.0	18.0	15.4	39.1	134.8	729.3

¹Includes output by Contractors only

²Firms are stratified by turnover

Figures are provisional and subject to revisions to take account of the most recent information and more up-to-date seasonal factors (see Notes to Editor)

Table 1.10 Contractors Output¹ (New Work Only) by Type of Work

Current Prices (£ million)

a) New Work for Public Sector

Year	Housing	Infra - structure	Factories	Ware-houses	Oil, steel & coal	Schools & Colleges	Uni-versities	Health	Offices	Enter - tainment	Garages	Shops	Agri-culture	Miscell-aneous	All public sector
2005	159.8	242.5	0.0	1.1	0.0	106.7	41.0	93.2	37.1	42.6	0.0	0.0	0.1	40.7	764.8
2006	208.2	267.5	0.7	0.3	0.0	94.8	53.2	47.6	10.8	68.7	0.2	0.0	0.0	65.5	817.3
2007	178.1	325.0	0.6	4.9	0.0	88.4	53.6	71.1	15.4	84.2	0.0	0.0	0.0	39.3	860.5
2008	189.0	444.2	3.2	4.4	0.0	137.4	31.5	77.4	23.7	65.2	0.1	0.3	0.0	32.4	1009.0

b) New Work for Private Sector

Year	Housing	Infra - structure	Factories	Ware-houses	Oil, steel & coal	Schools & Colleges	Uni-versities	Health	Offices	Enter- tainment	Garages	Shops	Agri-culture	Miscell-aneous	All private sector
2005	1098.0	35.8	31.6	31.0	2.4	0.0	0.0	19.4	78.6	43.4	11.7	121.4	2.0	108.4	1583.8
2006	1185.7	78.5	53.0	30.8	0.0	0.0	0.0	20.2	86.8	73.9	12.8	180.7	1.6	136.0	1859.8
2007	1173.3	95.1	53.5	22.7	0.4	0.0	0.0	24.9	78.7	94.5	4.9	223.4	0.4	113.3	1885.1
2008	839.8	92.6	59.4	46.6	0.0	0.0	0.0	17.6	91.0	124.5	3.5	155.2	1.1	114.4	1545.8

c) New Work for Public and Private Sector

Year	Housing	Infra - structure	Factories	Ware-houses	Oil, steel & coal	Schools & Colleges	Uni-versities	Health	Offices	Enter - tainment	Garages	Shops	Agri-culture	Miscell-aneous	All Public & Private Work
2005	1257.9	278.3	31.6	32.0	2.4	106.7	41.0	112.6	115.7	86.0	11.7	121.4	2.1	149.1	2348.6
2006	1393.9	345.9	53.7	31.1	0.0	94.8	53.2	67.7	97.5	142.6	12.9	180.7	1.6	201.5	2677.1
2007	1351.3	420.1	54.1	27.6	0.4	88.4	53.6	96.0	94.2	178.7	4.9	223.4	0.4	152.6	2745.7
2008	1028.8	536.8	62.6	51.0	0.0	137.4	31.5	95.1	114.8	189.7	3.7	155.5	1.2	146.8	2554.8

¹ Includes output by contractors only

Chapter 2 The Structure of the Industry

Table 2.1 Structure of the Construction Industry

The table below shows the number of businesses that are either registered for VAT with HM Customs and Excise or which operate a PAYE scheme with the Inland Revenue, at June 2009

SIC (2003) class/subclass	Description	Turnover (£000) size band						Total
		0 - 99	100 - 499	500 - 1,999	2,000 - 4,999	5,000 - 9,999	10,000+	
45.11	Demolition and wrecking of buildings; earth moving	65	55	10	5	0	0	145
45.12	Test drilling and boring	5	5	0	0	0	0	10
45.21	General construction of buildings and civil engineering works	1,035	1,440	675	180	70	70	3,465
45.22	Erection of roof coverings and frames	70	90	25	5	0	0	185
45.23	Construction of motorways, roads, railways, airfields and sports facilities	75	155	45	10	0	5	295
45.24	Construction of water projects	5	5	5	5	0	0	20
45.25	Other construction work involving special trades	360	360	75	15	5	0	815
45.31	Installation of electrical wiring and fittings	580	540	140	35	10	10	1,315
45.32	Insulation work activities	20	30	15	0	0	0	65
45.33	Plumbing	455	455	110	25	10	5	1,060
45.34	Other building installation	80	60	20	5	0	0	160
45.41	Plastering	255	180	20	5	0	0	465
45.42	Joinery installation	595	505	110	10	5	0	1,225
45.43	Floor and wall covering	65	90	20	5	0	0	185
45.44	Painting and glazing	165	250	35	5	5	0	460
45.45	Other building completion	115	80	20	5	0	0	220
45.50	Renting of construction or demolition equipment with operator	155	95	35	10	5	0	300
Total		4,095	4,395	1,360	335	110	95	10,395

Source: Inter Departmental Business Register, Office for National Statistics, Statistics Research Branch, Department of Enterprise, Trade and Investment

Figures have been rounded to the nearest 5 to avoid disclosure and thus figures may not add back to totals.

**Table 2.2 Northern Ireland Census of Employment
September 2007
Employee Jobs**

SIC03	BUSINESS DESCRIPTIONS	Male Full-time	Male Part-time	Male	Female Full-time	Female Part-time	Female	Total
F	CONSTRUCTION	38,132	1,402	39,534	3,013	1,781	4,794	44,328
45	Construction	38,132	1,402	39,534	3,013	1,781	4,794	44,328
451	Site preparation	734	9	743	23	19	42	785
4511	Demolition and wrecking of buildings; earth moving	*	*	*	*	*	*	763
4512	Test drilling and boring	*	*	*	*	*	*	22
452	Building of complete constructions or parts thereof; civil engineering	20,735	722	21,457	1,738	887	2,625	24,082
4521	General construction of buildings and civil engineering works	15,641	551	16,192	1,503	701	2,204	18,396
4522	Erection of roof covering and frames	*	*	673	*	*	72	745
4523	Construction of motorways, roads, railways, airfields and sports facilities	2,183	55	2,238	81	66	147	2,385
4524	Construction of water projects	*	*	43	*	*	5	48
4525	Other construction work involving special trades	2,225	86	2,311	115	82	197	2,508
45211	Construction of commercial buildings	1,125	23	1,148	75	61	136	1,284
45212	Construction of domestic buildings	8,903	402	9,305	822	489	1,311	10,616
45213	Construction of civil engineering constructions	5,613	126	5,739	606	151	757	6,496
453	Building installation	9,954	266	10,220	799	491	1,290	11,510
4531	Installation of electrical wiring and fittings	5,766	100	5,866	437	264	701	6,567
4532	Insulation work activities	266	8	274	22	14	36	310
4533	Plumbing	3,585	142	3,727	294	193	487	4,214
4534	Other building installation	337	16	353	46	20	66	419
454	Building completion	5,811	370	6,181	417	350	767	6,948
4541	Plastering	774	94	868	34	34	68	936
4542	Joinery installation	2,171	148	2,319	142	161	303	2,622
4543	Floor and wall covering	378	25	403	55	28	83	486
4544	Painting and glazing	1,517	72	1,589	113	78	191	1,780
4545	Other building completion	971	31	1,002	73	49	122	1,124
455	Renting of construction or demolition equipment with operator	898	35	933	36	34	70	1,003
*	Not shown due to either no employees or confidentiality constraints							

Source: NI Census of Employment, DETI, September 2007

- NOTES: 1 The Census of Employment is a statutory enquiry of all employers in Northern Ireland, carried out biennially under the Statistics of Trade and Employment (NI) Order 1988.
- 2 The Census of Employment covers employee jobs only. It excludes: agriculture (but includes animal husbandry service activities and hunting, trapping and game propagation) the self-employed, HM Armed Forces, private domestic servants, homeworkers and trainees without a contract of employment (non-employed status).
- 3 Persons working 30 hours or less per week are normally regarded as being in part-time employment.
- 4 The Census of Employment counts the number of jobs rather than the number of persons with jobs. Therefore a person holding both a full-time and a part-time job, or someone with two part-time jobs, will be counted twice.
- 5 Employees are classified to a Standard Industrial Classification (SIC03) from the business description for each employment unit.

Table 2.3 Northern Ireland Employee Jobs¹ in Construction

Year	Quarter	Employee Jobs - Unadjusted	Quarterly Change- Unadjusted	Employee Jobs- Seasonally Adjusted	Quarterly Change- Seasonally Adjusted
2000	March	34,090	160	34,210	380
	June	34,470	380	34,610	390
	September	35,240	770	35,110	500
	December	35,500	260	35,380	270
2001	March	35,790	290	35,880	500
	June	35,810	30	35,950	70
	September	36,090	280	35,990	40
	December	36,680	590	36,570	570
2002	March	36,560	-120	36,630	70
	June	36,300	-260	36,410	-220
	September	36,280	-30	36,220	-200
	December	35,870	-410	35,760	-460
2003	March	35,400	-460	35,460	-300
	June	35,930	530	36,020	560
	September	36,010	80	35,970	-40
	December	36,320	310	36,220	250
2004	March	36,200	-120	36,330	110
	June	36,250	50	36,290	-40
	September	36,320	70	36,250	-30
	December	36,590	270	36,500	260
2005	March	36,820	240	36,970	470
	June	37,800	980	37,830	860
	September	38,340	530	38,240	410
	December ^(R)	40,080	1,740	39,990	1,750
2006	March ^(R)	40,770	690	40,900	910
	June ^(R)	41,280	510	41,220	320
	September ^(R)	41,670	390	41,690	470
	December ^(R)	42,130	460	42,050	370
2007	March ^(R)	42,450	320	42,590	530
	June ^(R)	43,750	1,310	43,670	1,090
	September ^(R)	44,330	570	44,340	670
	December ^(R)	44,780	450	44,720	380
2008	March ^(R)	44,030	-750	44,180	-540
	June ^(R)	43,150	-880	43,040	-1,140
	September ^(R)	41,380	-1,770	41,380	-1,660
	December ^(P)	39,680	-1,700	39,630	-1,750

Source: Quarterly Employment Survey (QES), DETI

¹ Figures are rounded to the nearest 10 and may not sum due to rounding.

(P) Provisional; (R) Revised

Notes:

Estimates of the number of employee jobs are obtained from the Quarterly Employment Survey (QES). The QES covers all public sector bodies, all private sector firms with 25 or more employees and a sample of the remainder. The sample size has been chosen in order that estimates of total employee jobs should be accurate to within +/- 1% of the Census of Employment total. The survey collects information on numbers of persons in full-time and part-time employment. It should be noted that the survey counts the number of jobs rather than the number of persons with jobs. For example, a person holding both a full-time job and a part-time job, or someone with two part-time jobs, will be counted twice.

**Table 2.4 Northern Ireland Labour Force Survey
Self employed in Construction Industry**

Year (Quarter 2)	Number
2009	32,000 ¹
2008	33,000
2007	31,000
2006	30,000
2005	32,000
2004	34,000
2003	29,000
2002	25,000
2001	25,000

Notes:

1. Figures for 2009 are for Quarter 1, comprising the months of January, February and March.

Quarter 2 comprises the months April, May and June.

Figures are rounded to the nearest thousand.

Above estimates are subject to sampling error.

Allocation between self employed and employees status is by self assessment.

The above estimates are based on re-weighted LFS estimates, which are in line with the 2006 mid-year population estimates.

From 2009 onwards the classification of respondents' industry of employment is based on the Standard Industrial Classification (2007).

Table 2.5 Northern Ireland Annual Survey of Hours and Earnings Earnings and Hours in the Construction Industry

full-time male employees, on adult rates, whose pay was not affected by absence

Construction Industry - SIC 2003 Division F

At April Each Year	Mean gross weekly earnings Of Which				Percentage of employees who received		
	Total	Overtime Pay	PBR etc	Premium payments	Overtime pay	PBR etc	Premium payments
2002	£371.0	£31.3	x	x	30.6%	7.5%	2.6%
2003	£386.9	£25.6	x	x	28.2%	13.6%	1.4%
2004	£399.2	£25.8	x	x	25.8%	7.9%	3.1%
2004 ¹	£403.5	£25.1	x	x	24.9%	4.8%	3.0%
2005 ¹	£392.7	£17.7	x	x	20.0%	6.0%	1.1%
2006 ¹	£430.6	£26.8	x	x	23.4%	5.0%	2.7%
2006 ²	£429.6	£27.2	x	x	23.5%	4.8%	2.8%
2007 ²	£456.2	£29.7	x	x	21.1%	5.2%	1.4%
2008 ²	£471.7	£27.6	x	x	24.4%	6.4%	0.0%

At April Each Year	Distribution of weekly earnings			Mean hourly earnings excluding overtime*	Mean weekly hours	
	10% earned less than	Median 50% earned less than	10% earned more than		Mean total weekly hours (including overtime)	Mean weekly overtime hours
2002	£215.8	£328.4	£549.4	£8.60	42.4	2.9
2003	£234.5	£349.0	£591.9	£9.12	42.0	2.4
2004	£223.1	£336.3	x	£9.35	42.3	2.4
2004 ¹	£231.9	£336.0	x	£9.47	42.3	2.3
2005 ¹	£185.9	£340.0	x	£9.34	41.7	1.5
2006 ¹	£203.0	£375.5	x	£10.22	41.5	2.0
2006 ²	£205.6	£373.3	x	£10.19	41.5	2.0
2007 ²	£242.7	£390.8	x	£10.57	42.8	2.4
2008 ²	£243.7	£407.3	x	£11.04	42.3	2.1

PBR - payment by results, includes piecework, bonuses, commission and incentive payments (includes profit related pay until 1996).

Premium pay - for shift-work, and for night or week-end work where these are not treated as overtime.

x - data unavailable or suppressed

* Average hourly earnings are calculated by dividing the sum of the weekly earnings of the group of employees by the sum of their total weekly hours.

¹ To improve coverage, supplementary data was collected for the 2004 and subsequent ASHE surveys for people who changed or started new jobs between sample selection and the survey period. The ASHE results since 2004 are therefore discontinuous with earlier results.

² For the 2006 ASHE results, ONS also introduced a small number of methodological changes. The ASHE results since 2006 are therefore discontinuous with earlier results.

Table 2.6 Northern Ireland Annual Survey of Hours and Earnings Earnings in the Construction Industry by Occupation

full-time male employees, on adult rates, whose pay was not affected by absence

	SOC 531 - Construction trades		SOC 5315 - carpenters and joiners		SOC 912 - elementary construction occupations	
At April Each Year	Mean gross weekly earnings	Mean hourly earnings excluding overtime	Mean gross weekly earnings	Mean hourly earnings excluding overtime	Mean gross weekly earnings	Mean hourly earnings excluding overtime
2002	£319.8	£7.43	£312.7	£7.33	£275.2	£5.83
2003	£367.6	£8.28	£334.3	£7.59	£274.9	£6.19
2004	£345.6	£8.01	£343.0	£7.57	£336.0	£7.49
2004 ¹	£348.8	£8.09	£345.8	£7.64	£334.4	£7.46
2005 ¹	£332.5	£7.97	£340.6	£7.85	£321.3	£7.03
2006 ¹	£404.2	£9.13	£377.3	£8.53	£292.0	£6.69
2006 ²	£407.9	£9.19	£379.1	£8.56	£291.7	£6.70
2007 ²	£411.6	£9.43	£412.3	£9.43	£333.1	£7.59
2008 ²	£415.4	£10.10	£384.6	£9.32	£405.9	£8.32

SOC - Standard Occupational Classification 2000

¹ To improve coverage, supplementary data was collected for the 2004 and subsequent ASHE surveys for people who changed or started new jobs between sample selection and the survey period. The ASHE results since 2004 are therefore discontinuous with earlier results.

² For the 2006 ASHE results, ONS also introduced a small number of methodological changes. The ASHE results since 2006 are therefore discontinuous with earlier results.

**Table 2.7 Northern Ireland Annual Survey of Hours and Earnings
Earnings and Hours in the Construction Industry and in all Industries and Services**

full-time male employees, on adult rates, whose pay was not affected by absence
Construction Industry - SIC 2003 Division F

FULL-TIME MALES							
CONSTRUCTION INDUSTRY				ALL INDUSTRIES AND SERVICES			
At April Each Year	Mean gross weekly earnings	Mean hourly earning excluding overtime	Mean total weekly hours (including overtime)		Mean gross weekly earnings	Mean hourly earning excluding overtime	Mean total weekly hours (including overtime)
2002	£371.0	£8.60	42.4		£431.9	£10.44	41.1
2003	£386.9	£9.12	42.0		£447.7	£10.91	40.7
2004	£399.2	£9.35	42.3		£466.0	£11.21	41.3
2004 ¹	£403.5	£9.47	42.3		£463.5	£11.16	41.3
2005 ¹	£392.7	£9.34	41.7		£486.5	£11.75	41.1
2006 ¹	£430.6	£10.22	41.5		£502.9	£12.20	41.1
2006 ²	£429.6	£10.19	41.5		£500.9	£12.15	41.1
2007 ²	£456.2	£10.57	42.8		£501.4	£12.17	41.0
2008 ²	£471.7	£11.04	42.3		£520.9	£12.57	41.2

¹ To improve coverage, supplementary data was collected for the 2004 and subsequent ASHE surveys for people who changed or started new jobs between sample selection and the survey period. The ASHE results since 2004 are therefore discontinuous with earlier results.

² For the 2006 ASHE results, ONS also introduced a small number of methodological changes. The ASHE results since 2006 are therefore discontinuous with earlier results.

2.8 Statistics of accidents reported to HSENI 2000/01 – 2007/08

2.8.1. All accidents – fatal, major injury and over 3 day

Year	Fatal	Major	Over 3 Day	Total
2000/01	12	578	3,421	4,011
2001/02	9	595	3,547	4,151
2002/03	21	650	3,039	3,710
2003/04	19	675	2,642	3,336
2004/05	15	640	2,359	3,014
2005/06(P)	20	599	2,645	3,264
2006/07	18	510	2,318	2,846
2007/08	16	557	2,179	2,752

2.8.2. All accidents by industrial sector

Year	Agric	Constr	Mfg&Q ¹	Educ	Health	Other	Total
2000/01	72	245	1,259	380	498	1,557	4,011
2001/02	57	236	1,195	392	467	1,804	4,151
2002/03	54	212	1,030	481	505	1,428	3,710
2003/04	42	246	963	350	454	1,281	3,336
2004/05	37	250	863	275	442	1,147	3,014
2005/06(P)	44	303	896	336	514	1,171	3,264
2006/07	32	276	808	211	480	1,039	2,846
2007/08	17	332	808	141	436	1,018	2,752

2.8.3. Major accidents by industrial sector

Year	Agric ²	Constr	Mfg & Q	Educ	Health	Other	Total
2000/01	N/A	68	122	206	52	130	578
2001/02	N/A	55	147	199	58	136	595
2002/03	N/A	60	116	293	58	123	650
2003/04	N/A	81	148	181	86	179	675
2004/05	N/A	98	146	119	88	189	640
2005/06(P)	N/A	87	134	154	88	136	599
2006/07	N/A	92	133	85	57	143	510
2007/08	N/A	128	187	34	48	160	557

2.8.4. Fatal accident incidence rates per 100,000 workers by industrial sector

Year	Agriculture	Construction	Manufacturing	All Industries
2000/01	19.16	8.5	1.91	0.94
2001/02	13.69	11.4	1.01	0.93
2002/03	12.4	12.7	1	2.6
2003/04	19.2	10.2	0	2.3
2004/05	11.9	6.7	2	1.6
2005/06(P)	28.5	7.4	3.1	2.3
2006/07	14.7	8.5	3.1	2.2
2007/08	19.8	6.4	1.1	2.1

¹ Mfg & Q: Manufacturing and Quarries.

² Non-fatal Agriculture accidents are not classified as "major" and "over 3 day", but simply as "non-fatal".

(P) = provisional figures

2.8.5. Construction sector – cause of accident by type of accident

Cause	2000/01			2001/02		
	Fatal	Major	Over 3 day	Fatal	Major	Over 3 day
Fall	3	39	38	0	24	36
Struck by	0	8	35	1	7	35
Handling, strains/sprains	0	5	35	0	1	35
Slip or trip	0	2	21	0	4	24
Vehicle	0	5	6	0	1	4
Collapsing or overturning	0	2	2	1	2	3
Others	0	7	37	2	16	34
Totals	3	68	174	4	55	171

Cause	2002/03			2003/04		
	Fatal	Major	Over 3 day	Fatal	Major	Over 3 day
Fall	5	29	20	3	29	34
Struck by	0	6	27	0	16	26
Handling, strains/sprains	0	2	31	0	4	41
Slip or trip	0	7	30	0	18	27
Vehicle	0	3	4	0	1	3
Collapsing or overturning	2	1	5	3	2	3
Others	2	12	26	0	11	26
Totals	9	60	143	6	81	160

2.8.5. Construction sector – cause of accident by type of accident (continued)

Cause	2004/05			2005/06(p)		
	Fatal	Major	Over 3 day	Fatal	Major	Over 3 day
Fall	2	40	25	3	42	31
Struck by		16	23		13	48
Handling, strains/sprains		10	50		5	55
Slip or trip		17	17		12	28
Vehicle	1	1	3		1	8
Collapsing or overturning	1	3	2		1	1
Others		11	24	2	13	40
Totals	4	98	148	5	87	211

Cause	2006/07			2007/08		
	Fatal	Major	Over 3 day	Fatal	Major	Over 3 day
Fall	1	40	33	2	56	38
Struck by		15	28	1	17	33
Handling, strains/sprains		5	36		6	43
Slip or trip		16	38		20	35
Vehicle		7	2	2	3	3
Collapsing or overturning	2	2	1			
Others	3	7	42		26	47
Totals	6	92	180	5	128	199

2.8.6. Construction sector – description of fatal accidents

Year	Number of Fatalities	Occupation	Employment Category	Description	Date
2000/01	3	Plumber	Self-employed	Fell 13m from landing.	28/04/2000
		Labourer	Employee	Fell from scaffolding.	25/09/2000 (Died 04 10 2000)
		Demolition worker	Employee	Fell through opening in floor of industrial premises.	16/11/2000
2001/02	4	Joiner	Employee	Crushed under bale of reinforced mesh that fell 8m during lifting operation.	21/06/2001
		Electrician	Self-employed	Electrocuted while rewiring a house.	19/11/2001
		Builder	Self-employed	Crushed when entangled between slewing ring and digger tracks.	04/12/2001
		Worker	Employee	Electrocuted when boom of excavator came in contact with 33kv overhead power lines.	15/12/2001
2002/03	8 +1 child	Painter	Employee	Electrocuted while working from MEWP when it came into contact with overhead power line.	08/05/2002
		Child (boy aged 5 yrs)	Member of the public	Trapped in 225mm diameter sewer pipe.	01/06/2002
		Roofer	Self-employed	Fell from roof while carrying out minor repairs.	19/07/2002
		Labourer	Self-employed	Crushed underneath staircase that collapsed.	03/09/2002
		Labourer	Employee	Fell following collapse of 8 staircases during placing of the staircases.	03/09/2002
		Businessman	Self-employed	Crushed under wall knocked over by arm of excavator.	18/11/2002
		Joiner	Employee	Fell 3.6m from cage mounted on telescopic handler; cage also fell onto the deceased.	03/12/2002
		Mastic asphalter	Employee	Slipped on hip roof and fell underneath middle guard rail and onto flat roof	21/01/2003 (Died 23 01 2003)
		Builder	Self-employed	Fell 13.5m from extension ladder mounted on top of tower scaffold.	07/02/2003
2003/04	6	Joiner	Employee	Fell 2.8m through an opening in the floor of a timber framed house	14/05/2003 (Died 16/05/2003)
		Sub-contractor	Self-employed	Crush in a trench collapse	30/08/2003
		Mushroom Picker	Employee	Crushed under an overturned excavator	23/10/2003
		Labourer		Fell from a ladder	17/11/2003
		Digger driver	Self-employed	Crushed under a wall collapse during demolition	10/12/2003 (Died 21/02/2004)
		Builder	Self-employed	Fell approx 7m off a roof	04/03/2004

2.8.6. Construction sector – description of fatal accidents (continued)

Year	Number of Fatalities	Occupation	Employment Category	Description	Date
2004/05	4	Joiner	Employed	Fell approx 2.4m from a wall with wet mortar	04/10/2004 (Died 07/10/2004)
		Labourer	Employed	Crushed under a wall collapse	12/02/2005
		Roofer	Employed	Fell approx.12.3m from a roof	15/03/2005
		Road Worker	Self-employed	Knocked over by a reversing lorry	22/03/2005
2005/06	5	Roofer	Employee	Fell approx. 5m through a roof light onto concrete floor	30/05/2005
		Fitter	Employee	Died in explosion at water treatment works whilst carrying out construction maintenance work	06/02/2006
		Farmer	Self-employed	Fell from roof (5m) through Perspex skylight on corrugated farm shed	13/10/2005 (Died 14/10/2005)
		Painter/ decorator	Employee	Fell from ladder whilst painting fascia at eaves of house	12/06/2005
		Road Worker	Self-employed	Electrocuted when an articulated lorry made contact with an overhead powerline	28/02/2006
2006/07	6	Maintenance	Employee	Fell from roof into well at Stewart Hall, Stewartstown	01/05/2006
		Construction Worker	Employee	Buried when a trench collapsed on top of him at construction site, Ballywalter Road, Millisle	08/05/2006
		Digger driver	Self-employed	A 9" wall collapsed on him during ground work on a farmyard near Limavady.	27/07/2006
		Joiner	Employee	Mobile building collapsed on top of IP when it was being moved at RAF Aldergrove.	19/09/2006
		Telescopic Handler Driver	Employee	Drowned in tank at construction of new pumping station in Portrush.	06/10/2006
		Engineer		Electrocuted when drilling rig made contact with overhead power line.	31/01/2007
2007/08	5	Grab Driver	Employed	Struck by lorry while standing beside his vehicle	02/05/2007
		Builder*	Self Employed	Fell from scaffolding at a site in Dunmurry	11/08/2007 (Died 18/08/2007)
		Builder*	Self Employed	Fell from garage roof at a house under construction in Ballynahinch	12/09/2007
		General Labourer	Employed	Died from injuries received when struck by collapsing gable wall in Fintona	25/01/2008
		General Labourer	Employed	Struck by reversing vehicle on site in Belfast	27/02/2008
2008/09	2	Plant Operator	Employed	Died when dumper he was driving went off the edge of steep earth ramp	09/05/2008
		General Labourer	Employed	Died from injuries sustained after fall from height on construction site	11/12/2008 (Died 26/12/2008)

* accidents not reportable under RIDDOR but investigated by HSENI

Survey Response for QCE

For the quarter 1st January to 31st March 2009, 88% of contracting firms in the sample participated in the survey. A breakdown of response by stratum is highlighted below. Construction firms are stratified according to annual turnover, ranging from the small stratum one firms with an annual turnover of less than £125,000 through to the large stratum six firms which have an annual turnover in excess of £10.5 million.

As can be seen from the table, a high level of response was achieved from stratum 2 to 6 firms. Response was lower from stratum 1 firms. Each quarter, there is ongoing effort to improve overall response.

2009 Jan - Mar	Stratum	Annual Turnover (£ '000)	Response (%)
	1	0 - 124	50
	2	125 - 549	89
	3	550 - 2,099	89
	4	2,100 - 5,249	99
	5	5,250 - 10499	94
	6	10,500+	92
	Overall		88

Notes to Editors

1. Statistics derived from the QCE are based on returns made by Construction Firms and Public Sector Direct Labour Departments.
2. The sample of firms in the QCE includes only VAT registered firms in Standard Industrial Classification Division 45 (Construction) on the Inter Departmental Business Register (IDBR).
3. Construction activity measured by QCE includes general construction and demolition work, construction and repair of buildings, civil engineering, installation of fixtures and fittings and any other building completion work.
4. The following definitions are used in the QCE to describe Construction Activity:

New Work is any new construction activity e.g. factory and office extensions, major re-construction, major alterations, site preparation and demolition.

Repair and Maintenance is all on-site work not defined as new construction, e.g. housing conversions, extensions and improvements.

Housing refers to all housing construction activity, both private and public sector.

Infrastructure refers to any work on roads and car parks, water and sewerage, electricity, gas, communications, air transport, railways, harbours and waterways.

Other Work refers to factories, warehouses, oil, steel gas and coal, schools and colleges, offices and banks, shops, universities, entertainment, agriculture, health and welfare, garages and miscellaneous.

5. The base year for all the series published is 2005 (2005 = 100).
6. Tables 1.1, 1.2, 1.3, 1.4, 1.7, 1.8 (b) are all seasonally adjusted. Seasonal adjustment aids interpretation by removing seasonal variation. The data is seasonally adjusted using X11 ARIMA software.
7. Totals may not tally as each category is individually deflated and seasonally adjusted.

8. Results, particularly for the latest quarter, are provisional and subject to revision as fuller information becomes available from subsequent returns in future quarters.

The time series contained within Chapter 1-Output are updated quarterly to take account of:

- Firms not returning forms on schedule;
- Validation of data;
- Changes to Grossing Factors;
- Changes to the Seasonal Adjusters;

9. The QCE is a sample survey, the results of which are subject to both sampling and non-sampling error.

For further information please contact Mr Jonathan Harvey:

Telephone (028) 9034 8202 E-mail Jonathan.Harvey@dfpni.gov.uk

Fax (028) 9034 8276

Electronic and hard copies of this bulletin are available from:

Central Survey Unit
Northern Ireland Statistics and Research Agency
McAuley House
2 - 14 Castle Street
BELFAST
BT1 1SY

Or on the Central Survey Unit Website at <http://www.csu.nisra.gov.uk>