

Northern Ireland Construction Bulletin 1st October to 31st December 2010

20th April 2011



Contents

	Page
Introduction.....	3
Key Findings.....	3
Revisions to previously published figures.....	5
Chapter 1 Output	6
1.1 Index of Construction.....	6
1.2 Index of New Work.....	7
1.3 Index of Repair & Maintenance.....	8
1.4 Index of Housing.....	9
1.5 Index of Infrastructure.....	10
1.6 Index of Other Work.....	11
1.7 Value of Construction Output.....	12
1.8(a) Output (Current Prices).....	13
1.8(b) Output (Constant Prices and Seasonally adjusted).....	14
1.9 Private Contractors: Value of Work Done By Stratum.....	15
1.10 Contractors Output (New Work only) by Type of Work.....	16
Chapter 2 The Structure of the Industry.....	17
2.1 Structure of the Construction Industry.....	17
2.2 Northern Ireland Census of Employment.....	18
2.3 Northern Ireland Employee Jobs in Construction.....	19
2.4 Northern Ireland Labour Force Survey.....	20
2.5 Northern Ireland Annual Survey of Hours and Earnings Earnings and Hours in the Construction Industry.....	21
2.6 Northern Ireland Annual Survey of Hours and Earnings Earnings in the Construction Industry by Occupation...	22
2.7 Northern Ireland Annual Survey of Hours and Earnings Earnings and Hours in the Construction Industry and in all Industries and Services.....	23
2.8 Statistics of accidents reported to HSENI 2000/01-2010/11.....	24
Survey Response.....	30
Notes to Editors.....	31

Northern Ireland Construction Bulletin

1st October to 31st December 2010

Introduction

The Northern Ireland Construction Bulletin is produced by the Central Survey Unit of the Northern Ireland Statistics and Research Agency, on behalf of the Department of Finance and Personnel.

The Bulletin contains information on the value and volume of Construction Output in Northern Ireland. These figures are derived from the Northern Ireland Quarterly Construction Enquiry (QCE). This is a statutory survey of construction firms operating in Northern Ireland. Each quarter a sample of construction firms are asked to provide details of the value of construction activity they have undertaken in a specified period. The QCE principally produces the Index of Construction, which is an estimate of the volume of construction output. It is an important economic indicator, which contributes to the calculation of UK GDP.

Additional information on the Northern Ireland Construction Industry is also contained in the Bulletin. This information is provided by the Statistics Research Branch of the Department of Enterprise, Trade and Investment and the Health and Safety Executive Northern Ireland (from a variety of survey sources).

Key Findings

- The total volume of construction output in the fourth quarter of 2010 fell by 5.1% compared with the third quarter of 2010.
- The total volume of construction output in the fourth quarter of 2010 was 15.2% lower compared to the same quarter in 2009.
- In the fourth quarter of 2010, New Work fell by 8.3%
- In the fourth quarter of 2010, Repair and Maintenance rose by 5.7%.

Readers are advised:

- Results, particularly for the most recent quarters, are provisional and subject to revision, as fuller information becomes available from subsequent returns in future quarters.
- The figures reported above are based on returns from construction firms for the period 1st October to 31st December 2010;

Revisions to previously published figures

Revisions to Table 1.1 estimates			
Index 2005=100			
Year / Quarter	Previously Published IOC ¹	Revised IOC ²	Difference
2009 Jul - Sep	92.5	92.4	-0.1
Oct - Dec	91.2	91.4	0.2
2010 Jan - Mar	85.8	86.0	0.2
Apr - Jun	81.4	81.0	-0.4
Jul - Sep	82.1	81.7	-0.4

¹Published Quarter 3 2010

²Updated Quarter 4 2010

The table above highlights the latest revisions to previously published estimates of the Index of Construction for the last five quarters.

Each quarter, the estimates are revised to take account of:

- Late returns/ fuller information coming from firms
- Validation of data
- Updated deflators
- Updated seasonal adjustment
- Changes to the grossing factors

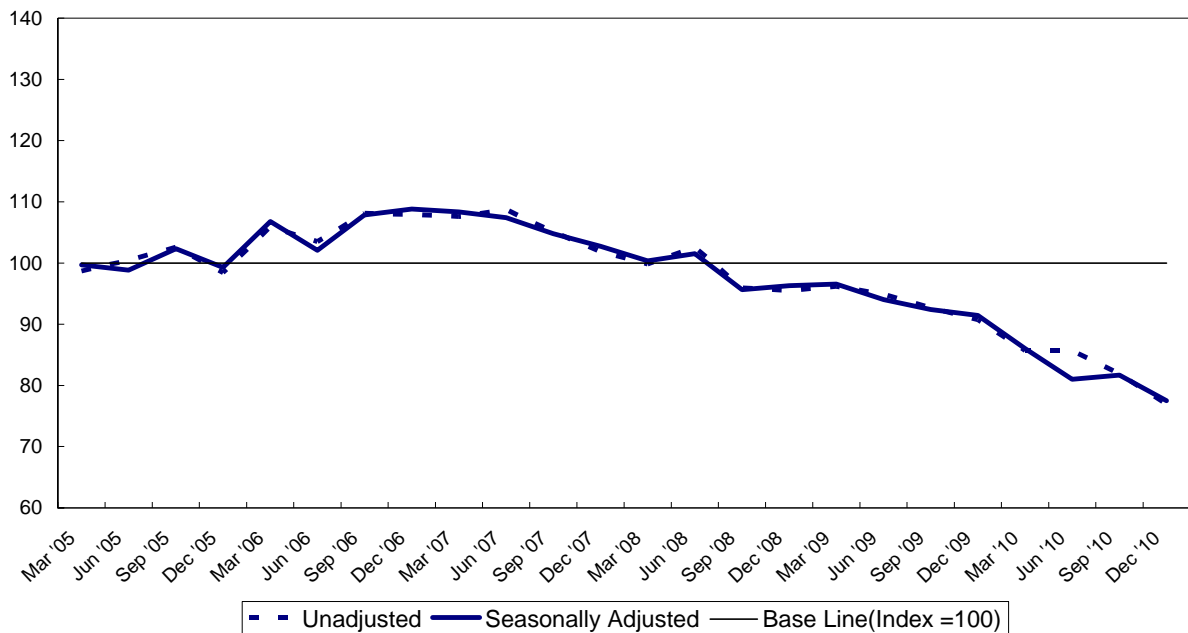
Chapter 1 Output

Figures are provisional and subject to revisions to take account of the most recent information and more up-to-date seasonal factors (see Notes to Editor)

Table 1.1 Index of Construction			Index 2005=100	
Year / Quarter			Unadjusted	Seasonally Adjusted
2005	Jan - Mar		98.7	99.7
	Apr - Jun		100.4	98.8
	Jul - Sep		102.6	102.3
	Oct - Dec		98.4	99.3
2006	Jan - Mar		105.9	106.8
	Apr - Jun		103.5	102.1
	Jul - Sep		108.1	107.8
	Oct - Dec		107.9	108.8
2007	Jan - Mar		107.6	108.4
	Apr - Jun		108.7	107.4
	Jul - Sep		105.1	104.8
	Oct - Dec		101.9	102.7
2008	Jan - Mar		99.8	100.3
	Apr - Jun		102.6	101.5
	Jul - Sep		95.9	95.6
	Oct - Dec		95.5	96.3
2009	Jan - Mar		96.2	96.6
	Apr - Jun		94.9	94.0
	Jul - Sep		92.7	92.4
	Oct - Dec		90.7	91.4
2010	Jan - Mar		85.7	86.0
	Apr - Jun		81.7	81.0
	Jul - Sep		81.9	81.7
	Oct - Dec		76.9	77.5

Figure 1.1 Index of Construction

Quarters ending March 2005 to December 2010

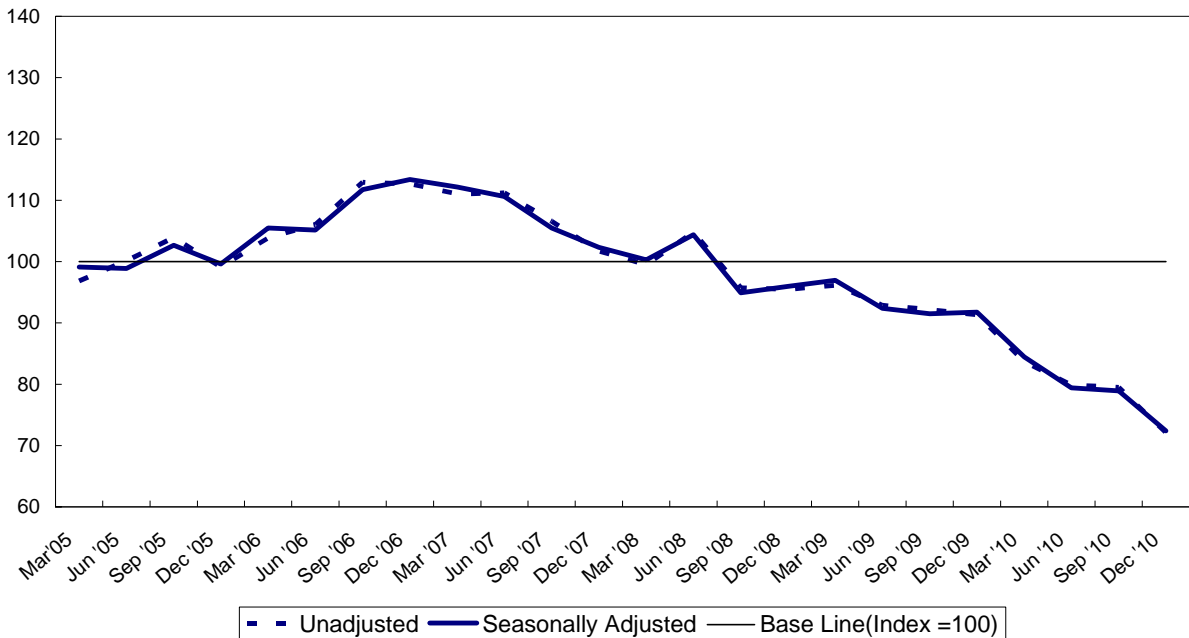


Figures are provisional and subject to revisions to take account of the most recent information and more up-to-date seasonal factors (see Notes to Editor)

Table 1.2 Index of New Work ¹			Index 2005=100	
Year / Quarter			Unadjusted	Seasonally Adjusted
2005	Jan - Mar		96.9	99.1
	Apr - Jun		100.1	98.9
	Jul - Sep		103.9	102.7
	Oct - Dec		99.1	99.6
2006	Jan - Mar		103.8	105.5
	Apr - Jun		106.0	105.1
	Jul - Sep		113.0	111.7
	Oct - Dec		112.7	113.4
2007	Jan - Mar		111.0	112.1
	Apr - Jun		111.2	110.6
	Jul - Sep		106.6	105.5
	Oct - Dec		101.7	102.3
2008	Jan - Mar		99.5	100.3
	Apr - Jun		104.8	104.4
	Jul - Sep		95.7	94.9
	Oct - Dec		95.5	95.9
2009	Jan - Mar		96.2	97.0
	Apr - Jun		92.9	92.4
	Jul - Sep		92.2	91.5
	Oct - Dec		91.3	91.7
2010	Jan - Mar		83.7	84.4
	Apr - Jun		79.9	79.4
	Jul - Sep		79.5	78.9
	Oct - Dec		72.1	72.4

¹New work relates to new construction including housing, factory and office extensions, major reconstruction, major alteration, site preparation and demolition

Figure 1.2 Index of New Work
Quarters ending March 2005 to December 2010

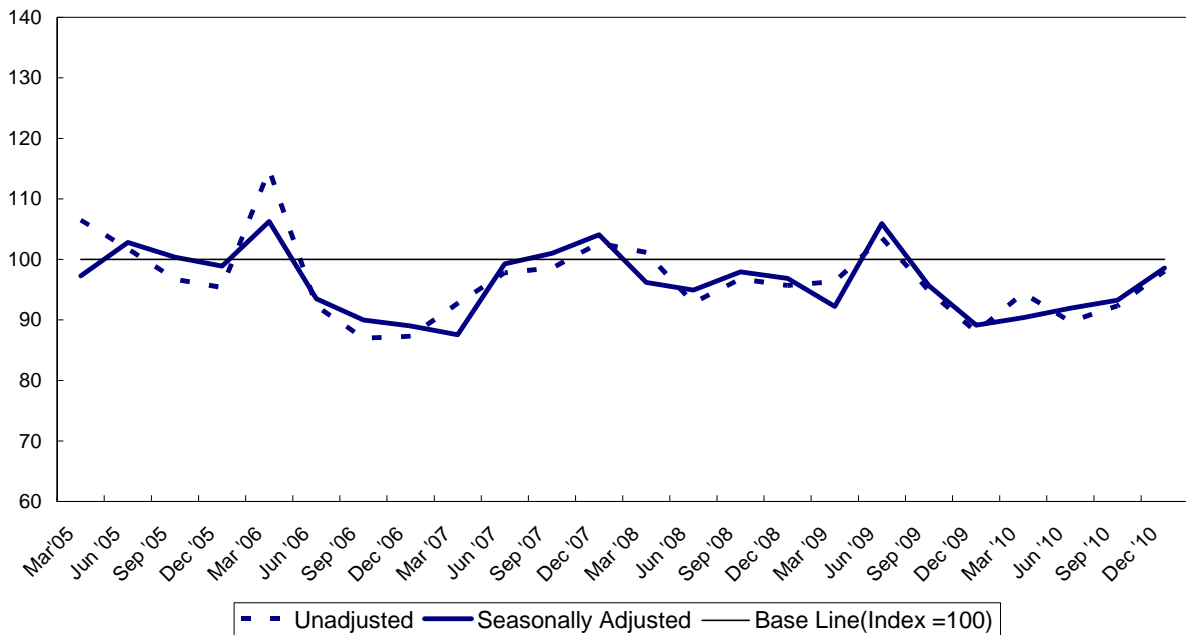


Figures are provisional and subject to revisions to take account of the most recent information and more up-to-date seasonal factors (see Notes to Editor)

Table 1.3 Index of Repair and Maintenance¹			Index 2005=100	
Year / Quarter			Unadjusted	Seasonally Adjusted
2005	Jan - Mar		106.5	97.3
	Apr - Jun		101.7	102.8
	Jul - Sep		96.7	100.4
	Oct - Dec		95.4	98.9
2006	Jan - Mar		114.7	106.3
	Apr - Jun		92.3	93.5
	Jul - Sep		87.0	90.0
	Oct - Dec		87.3	89.0
2007	Jan - Mar		92.8	87.5
	Apr - Jun		97.8	99.3
	Jul - Sep		98.6	101.0
	Oct - Dec		102.7	104.1
2008	Jan - Mar		101.2	96.2
	Apr - Jun		92.8	94.9
	Jul - Sep		96.8	98.0
	Oct - Dec		95.7	96.9
2009	Jan - Mar		96.3	92.2
	Apr - Jun		103.6	105.9
	Jul - Sep		94.8	95.6
	Oct - Dec		88.0	89.1
2010	Jan - Mar		94.4	90.4
	Apr - Jun		89.7	92.0
	Jul - Sep		92.3	93.3
	Oct - Dec		98.0	98.6

¹ Repair & Maintenance includes all on-site work not defined as new construction.

Figure 1.3 Index of Repair and Maintenance
Quarters Ending March 2005 to December 2010

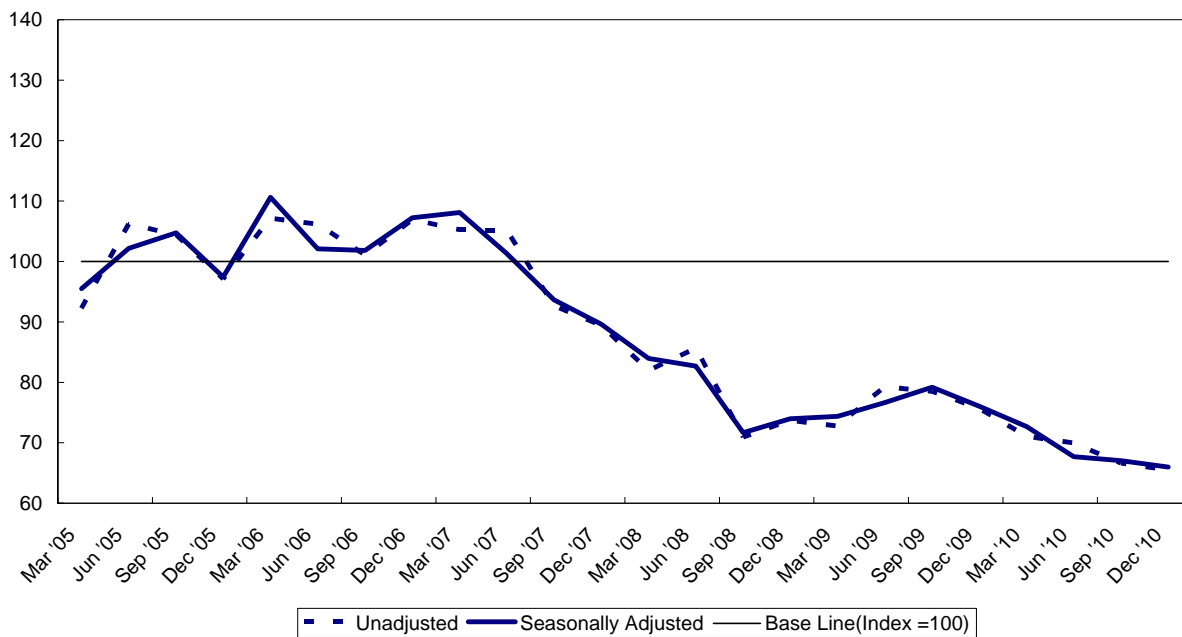


Figures are provisional and subject to revisions to take account of the most recent information and more up-to-date seasonal factors (see Notes to Editor)

Table 1.4 Index of Housing¹		Index 2005=100	
Year / Quarter		Unadjusted	Seasonally Adjusted
2005	Jan - Mar	92.2	95.5
	Apr - Jun	106.2	102.2
	Jul - Sep	104.4	104.7
	Oct - Dec	97.1	97.4
2006	Jan - Mar	107.2	110.6
	Apr - Jun	106.2	102.1
	Jul - Sep	101.1	101.8
	Oct - Dec	106.9	107.2
2007	Jan - Mar	105.3	108.1
	Apr - Jun	105.2	101.3
	Jul - Sep	92.7	93.7
	Oct - Dec	89.4	89.6
2008	Jan - Mar	82.0	83.9
	Apr - Jun	85.7	82.7
	Jul - Sep	70.9	71.7
	Oct - Dec	73.7	74.0
2009	Jan - Mar	72.8	74.4
	Apr - Jun	79.3	76.6
	Jul - Sep	78.5	79.2
	Oct - Dec	75.7	76.0
2010	Jan - Mar	71.1	72.7
	Apr - Jun	70.0	67.7
	Jul - Sep	66.6	67.0
	Oct - Dec	65.5	66.0

¹ Housing relates to all housing construction activity, both private and public sector.

Figure 1.4 Index of Housing
Quarters Ending March 2005 to December 2010



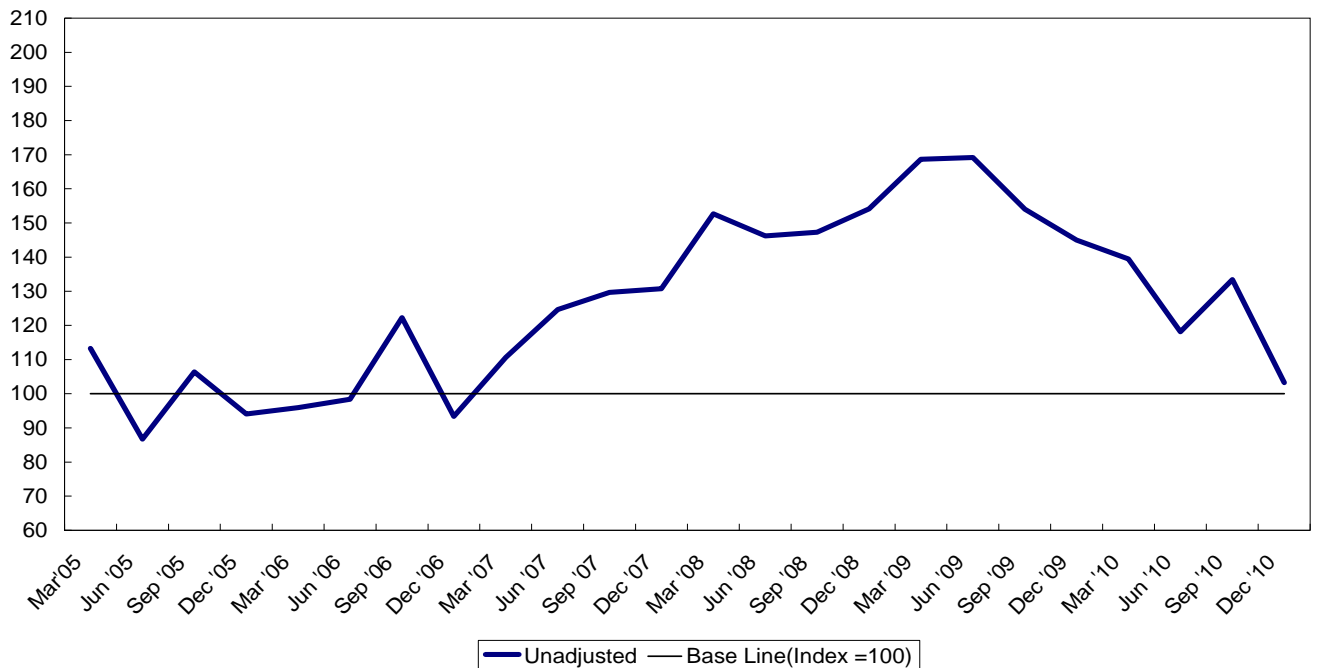
Figures are provisional and subject to revisions to take account of the most recent information and more up-to-date seasonal factors (see Notes to Editor)

Table 1.5 Index of Infrastructure ¹		
Index 2005=100		
Year / Quarter		Unadjusted ²
2005	Jan - Mar	113.3
	Apr - Jun	86.7
	Jul - Sep	106.4
	Oct - Dec	94.1
2006	Jan - Mar	96.0
	Apr - Jun	98.4
	Jul - Sep	122.3
	Oct - Dec	93.4
2007	Jan - Mar	110.7
	Apr - Jun	124.6
	Jul - Sep	129.6
	Oct - Dec	130.8
2008	Jan - Mar	152.7
	Apr - Jun	146.2
	Jul - Sep	147.3
	Oct - Dec	154.2
2009	Jan - Mar	168.7
	Apr - Jun	169.2
	Jul - Sep	154.0
	Oct - Dec	145.0
2010	Jan - Mar	139.5
	Apr - Jun	118.2
	Jul - Sep	133.4
	Oct - Dec	103.2

¹ Infrastructure includes work on roads and car parks, water and sewerage, electricity, gas, communication, air transport, railways, harbours and waterways

² This series was not found to be a candidate for seasonal adjustment and therefore seasonally adjusted figures are not shown

Figure 1.5 Index of Infrastructure
Quarters Ending March 2005 to December 2010



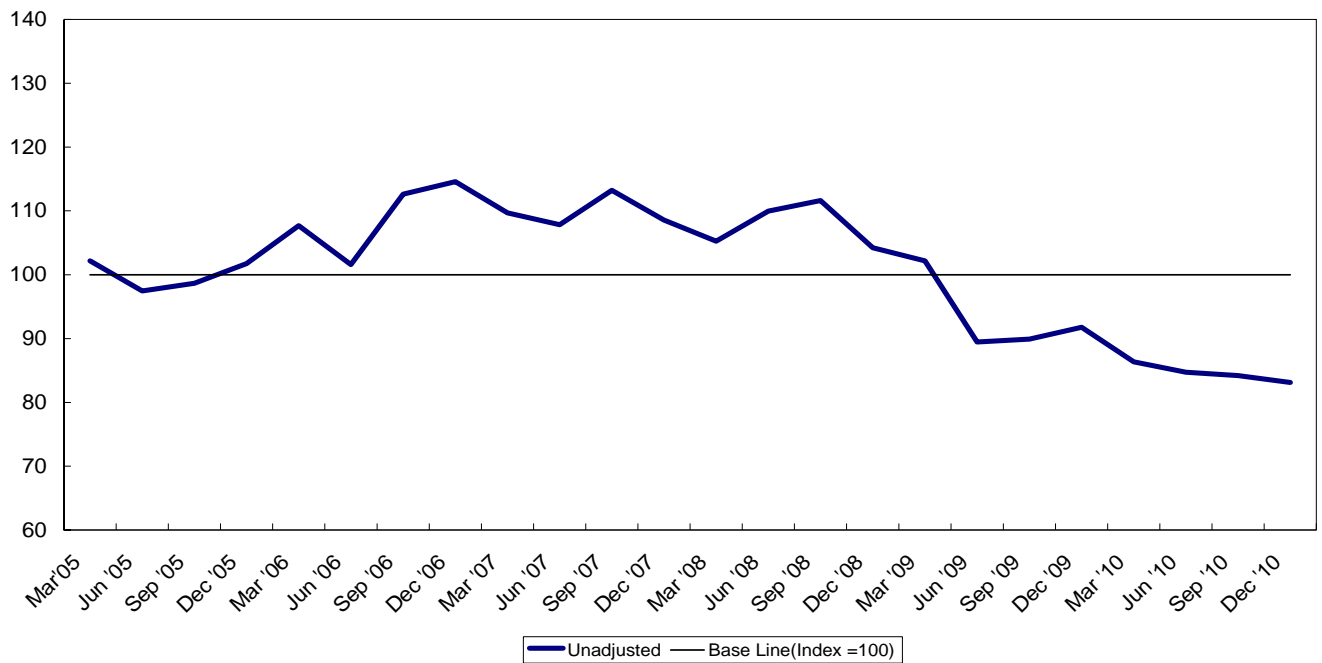
Figures are provisional and subject to revisions to take account of the most recent information and more up-to-date seasonal factors (see Notes to Editor)

Table 1.6 Index of Other Work¹		
Index 2005=100		
		Unadjusted²
2005	Jan - Mar	102.2
	Apr - Jun	97.5
	Jul - Sep	98.7
	Oct - Dec	101.8
2006	Jan - Mar	107.7
	Apr - Jun	101.6
	Jul - Sep	112.6
	Oct - Dec	114.6
2007	Jan - Mar	109.7
	Apr - Jun	107.8
	Jul - Sep	113.2
	Oct - Dec	108.6
2008	Jan - Mar	105.3
	Apr - Jun	110.0
	Jul - Sep	111.6
	Oct - Dec	104.2
2009	Jan - Mar	102.2
	Apr - Jun	89.5
	Jul - Sep	89.9
	Oct - Dec	91.8
2010	Jan - Mar	86.4
	Apr - Jun	84.7
	Jul - Sep	84.2
	Oct - Dec	83.1

¹ Other work includes factories, warehouse, oil, steel, gas and coal, school, colleges, offices, banks, shops, universities, entertainment, agriculture, health, welfare, garages and miscellaneous.

² This series was not found to be a candidate for seasonal adjustment and therefore seasonally adjusted figures are not shown

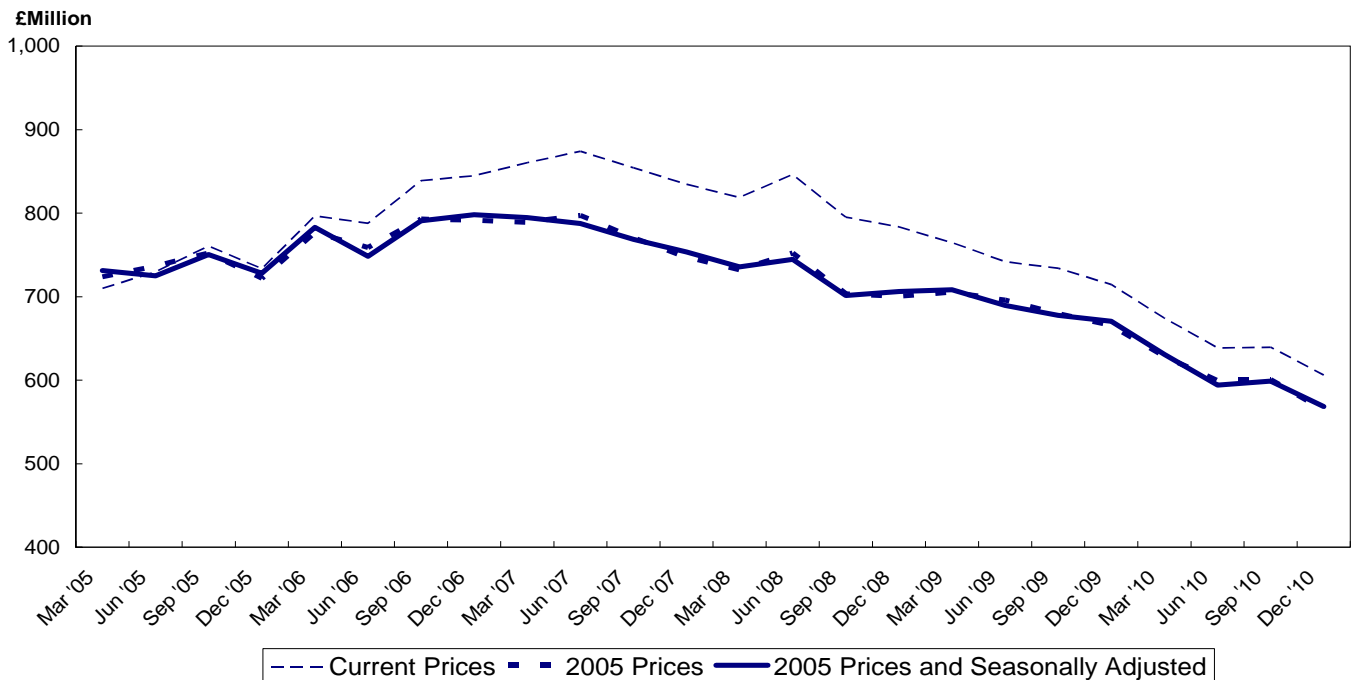
Figure 1.6 Index of Other Work
 Quarters Ending March 2005 to December 2010



Figures are provisional and subject to revisions to take account of the most recent information and more up-to-date seasonal factors (see Notes to Editor)

Table 1.7 Value of Construction Output			
Year / Quarter	Current prices (£ Million)	2005 prices (£ Million)	2005 prices and Seasonally Adjusted (£ Million)
2005 Jan - Mar	710	724	731
Apr - Jun	730	737	725
Jul - Sep	761	752	750
Oct - Dec	733	722	728
Total	2,934	2,934	2,934
2006 Jan - Mar	797	777	783
Apr - Jun	788	759	749
Jul - Sep	839	793	791
Oct - Dec	845	792	798
Total	3,268	3,121	3,121
2007 Jan - Mar	860	789	795
Apr - Jun	874	797	788
Jul - Sep	854	771	769
Oct - Dec	835	747	753
Total	3,424	3,103	3,103
2008 Jan - Mar	819	732	736
Apr - Jun	846	752	745
Jul - Sep	795	704	701
Oct - Dec	783	700	706
Total	3,244	2,890	2,890
2009 Jan - Mar	765	705	708
Apr - Jun	742	696	690
Jul - Sep	734	680	678
Oct - Dec	714	665	671
Total	2,955	2,746	2,746
2010 Jan - Mar	674	629	631
Apr - Jun	639	599	594
Jul - Sep	640	601	599
Oct - Dec	606	564	568

Figure 1.7 Value of Construction Output
Quarters Ending March 2005 to December 2010



Figures are provisional and subject to revisions to take account of the most recent information and more up-to-date seasonal factors (see Notes to Editor)

Table 1.8 (a) Output¹															
Current Prices (£ million)															
YEAR/ QUARTER		New housing		Other New Work non-housing				All New Work	Repair and Maintenance						All Work
				Other New Work exc infrastructure			Housing		Other Work			All Repair & maintenance			
		Public	Private	Infra - structure	Public	Private Industrial	Private Commercial		Public	Private	Infra - structure		Public	Private	
2005	Jan - Mar	34.0	247.8	78.4	109.1	18.7	79.5	567.5	36.9	15.2	27.3	43.3	19.8	142.5	710.0
	Apr - Jun	35.8	291.9	57.6	96.6	19.2	92.2	593.1	35.6	23.7	25.1	30.4	21.8	136.6	729.7
	Jul - Sep	38.9	298.8	74.0	105.5	11.2	97.1	625.5	26.5	23.9	30.5	27.5	26.7	135.1	760.6
	Oct - Dec	51.2	259.6	69.1	88.2	15.8	116.3	600.1	28.7	23.9	25.1	27.7	28.0	133.3	733.5
2006	Jan - Mar	48.1	292.2	72.7	90.6	16.8	114.4	634.7	32.1	34.5	24.0	39.5	31.9	162.1	796.8
	Apr - Jun	51.7	295.2	81.2	85.1	15.1	127.7	656.1	33.6	26.0	21.5	26.0	24.7	131.8	787.9
	Jul - Sep	47.8	292.8	111.6	97.4	23.6	137.5	710.6	21.2	31.0	19.4	33.6	23.1	128.3	838.9
	Oct - Dec	60.6	305.6	81.1	106.5	28.3	132.2	714.2	27.6	26.9	18.9	21.1	35.9	130.5	844.7
2007	Jan - Mar	49.3	313.9	93.0	116.8	20.2	127.3	720.5	25.5	34.8	29.3	31.3	18.9	139.8	860.3
	Apr - Jun	48.7	310.0	106.4	107.5	15.3	137.9	725.7	32.4	34.4	29.2	24.1	28.3	148.4	874.1
	Jul - Sep	41.8	278.7	109.6	105.5	23.6	140.8	699.9	27.9	29.3	32.0	40.7	24.4	154.4	854.3
	Oct - Dec	38.9	270.2	111.8	102.1	17.5	133.7	674.1	34.8	23.6	30.4	35.3	36.6	160.6	834.8
2008	Jan - Mar	36.6	240.3	132.0	111.3	16.1	123.3	659.6	24.9	39.9	31.2	31.8	31.4	159.2	818.8
	Apr - Jun	52.4	244.2	128.3	108.1	21.2	143.7	698.0	25.8	38.5	27.9	24.8	31.2	148.1	846.2
	Jul - Sep	45.4	188.2	127.1	108.3	35.8	129.4	634.3	28.3	35.4	33.5	26.9	36.8	160.9	795.2
	Oct - Dec	57.7	169.1	139.4	112.3	32.8	112.8	624.1	32.0	41.6	28.8	25.1	31.8	159.3	783.4
2009	Jan - Mar	57.0	168.0	142.8	121.9	12.2	102.4	604.3	30.5	33.0	31.7	27.7	37.4	160.3	764.6
	Apr - Jun	61.2	170.4	139.5	109.7	14.4	75.1	570.3	26.7	50.5	34.7	26.7	33.0	171.5	741.9
	Jul - Sep	39.1	204.9	133.4	117.7	10.2	70.5	575.8	26.3	43.2	30.7	28.7	29.3	158.2	734.0
	Oct - Dec	34.4	201.0	126.8	106.7	19.4	77.6	565.9	28.7	41.9	29.8	26.5	21.6	148.6	714.5
2010	Jan - Mar	41.8	179.6	112.4	104.8	12.5	63.6	514.7	29.1	38.1	39.3	33.9	19.4	159.8	674.4
	Apr - Jun	31.7	190.9	95.7	92.5	13.4	63.9	488.2	17.1	43.8	32.7	32.4	24.4	150.5	638.7
	Jul - Sep	29.2	176.4	110.5	79.6	15.9	72.7	484.3	17.7	47.1	35.0	29.9	25.5	155.2	639.5
	Oct - Dec	33.0	170.7	83.2	79.8	15.0	59.0	440.7	15.6	47.5	30.6	38.0	33.9	165.5	606.1

¹Includes output by contractors and public sector direct labour departments

Figures are provisional and subject to revisions to take account of the most recent information and more up-to-date seasonal factors (see Notes to Editor)

Table 1.8 (b) Output¹

Constant (2005) Prices and Seasonally Adjusted (£ million)

YEAR/ QUARTER	New housing		Other New Work non-housing				All New Work ²	Repair and Maintenance					All Repair & Maintenance ²	All Work ²
			Other New Work exc infrastructure					Housing		Other Work				
	Public	Private	Infra - structure	Public	Private Industrial	Private Commercial		Public	Private	Infra - structure	Public	Private		
2005 Jan - Mar	35.0	264.1	81.7	111.0	18.5	86.4	591.3	36.4	13.6	26.1	35.3	20.3	133.2	731.1
Apr - Jun	35.9	283.0	58.4	96.5	17.8	89.4	589.8	32.9	24.3	25.6	36.2	22.2	140.7	724.9
Jul - Sep	38.6	292.9	73.0	104.0	13.6	94.7	612.5	30.0	23.7	29.3	27.6	26.2	137.4	750.4
Oct - Dec	49.9	257.9	66.4	88.0	15.3	114.1	594.3	28.8	27.2	27.1	28.9	27.4	135.4	728.0
2006 Jan - Mar	46.8	295.6	69.6	91.0	16.1	119.9	629.3	29.8	29.3	21.7	31.5	30.9	145.5	783.2
Apr - Jun	50.2	271.8	74.6	84.0	18.0	122.5	627.2	28.7	24.7	20.7	29.0	23.6	128.0	748.5
Jul - Sep	45.2	277.1	100.3	93.1	19.8	130.9	666.5	23.8	29.2	17.6	31.1	21.4	123.2	791.0
Oct - Dec	55.8	289.8	73.0	100.6	22.3	126.6	676.4	23.5	28.5	19.1	20.4	32.9	121.8	798.1
2007 Jan - Mar	44.4	299.8	80.4	107.8	24.3	128.3	669.0	23.8	28.1	24.7	24.2	17.1	119.8	794.7
Apr - Jun	43.3	271.5	94.2	95.8	17.9	130.4	659.9	29.1	30.1	26.5	25.0	25.5	135.9	787.7
Jul - Sep	37.1	254.3	97.4	91.4	18.9	130.2	629.4	25.6	26.3	27.4	35.0	21.3	138.2	768.6
Oct - Dec	34.0	245.6	100.0	86.6	13.5	124.8	610.5	29.0	23.3	29.3	32.3	32.0	142.5	753.5
2008 Jan - Mar	31.5	221.7	120.6	95.2	19.2	121.8	598.2	22.0	31.9	25.1	24.2	27.3	131.7	735.9
Apr - Jun	44.7	206.3	117.5	92.7	23.7	135.7	622.6	22.2	31.4	24.2	24.1	26.7	130.0	744.6
Jul - Sep	39.4	169.7	114.9	92.1	27.9	119.0	566.1	24.3	30.0	27.1	21.6	30.3	134.1	701.5
Oct - Dec	51.3	160.5	125.4	96.4	24.9	105.8	572.4	25.0	37.9	26.1	21.4	26.2	132.6	706.3
2009 Jan - Mar	51.8	170.2	137.1	111.1	14.5	101.3	578.4	25.1	25.6	24.1	20.3	30.8	126.3	708.3
Apr - Jun	56.3	164.3	135.0	104.1	16.5	74.1	551.0	22.4	39.4	28.9	24.6	27.3	145.0	689.5
Jul - Sep	35.2	197.1	123.8	113.0	8.4	69.1	545.7	22.4	36.5	24.7	23.3	24.0	130.9	677.7
Oct - Dec	30.7	191.7	116.1	106.9	16.1	80.5	547.3	22.1	37.1	26.6	22.2	17.5	122.0	670.6
2010 Jan - Mar	38.0	176.2	103.1	107.8	16.8	69.6	503.8	23.1	29.7	29.5	24.7	15.7	123.7	630.9
Apr - Jun	29.1	172.0	87.4	97.1	16.9	70.5	473.7	14.5	32.9	27.2	29.3	20.1	125.9	594.3
Jul - Sep	27.1	165.7	100.3	84.6	14.3	77.2	470.9	15.1	38.8	28.3	24.6	20.9	127.7	599.1
Oct - Dec	30.8	160.9	74.9	85.1	12.6	63.1	431.8	11.7	40.4	27.4	31.8	27.7	135.0	568.4

¹ Includes output by contractors and public sector direct labour departments

² See notes to Editor (Paragraph 7)

Figures are provisional and subject to revisions to take account of the most recent information and more up-to-date seasonal factors (see Notes to Editor)

Table 1.9 Output¹ (Private Contractors only) by Stratum² of Firm

Current Prices (£million)

4th Quarter 2010															
Stratum of Firm	Annual Turnover (£'000)	New housing		Other New Work non-housing				All New Work	Repair and Maintenance						All Work
		Public	Private	Infra - structure	Other New Work exc infrastructure				Housing		Other Work			All Repair & maintenance	
					Public	Private Industrial	Private Commercial		Public	Private	Infra - structure	Public	Private		
1	0-124	0.0	7.3	0.5	0.4	0.2	1.2	9.6	0.0	12.2	0.0	1.5	1.9	15.6	25.2
2	125-549	0.8	46.9	0.2	0.0	0.0	1.7	49.5	1.8	24.4	1.4	4.5	11.8	44.0	93.5
3	550-2,099	0.8	52.6	4.8	2.0	1.8	10.3	72.2	3.8	7.5	5.0	2.6	12.8	31.7	104.0
4	2,100-5,249	2.2	39.9	6.3	2.9	0.8	4.1	56.2	5.8	2.9	0.0	0.4	3.1	12.1	68.3
5	5,250-10,499	14.5	9.0	8.0	10.7	0.5	8.9	51.6	3.0	0.5	1.7	1.7	2.0	8.8	60.5
6	10,500+	14.8	15.1	63.3	53.0	11.7	32.8	190.7	0.0	0.0	10.0	14.4	2.3	26.8	217.5
Total		33.0	170.7	83.2	69.0	15.0	59.0	429.9	14.4	47.5	18.2	25.1	33.9	139.1	569.0

¹Includes output by Contractors only

²Firms are stratified by turnover

Figures are provisional and subject to revisions to take account of the most recent information and more up-to-date seasonal factors (see Notes to Editor)

Table 1.10 Contractors Output¹ (New Work Only) by Type of Work

Current Prices (£ million)

a) New Work for Public Sector

Year	Housing	Infra - structure	Factories	Ware-houses	Oil, steel & coal	Schools & Colleges	Uni-versities	Health	Offices	Enter - tainment	Garages	Shops	Agri- culture	Miscell- aneous	All public sector
2005	159.8	242.5	0.0	1.1	0.0	106.7	41.0	93.2	37.1	42.6	0.0	0.0	0.1	40.7	764.8
2006	208.2	267.5	0.7	0.3	0.0	94.8	53.2	47.6	10.8	68.7	0.2	0.0	0.0	65.5	817.3
2007	178.5	325.2	0.6	4.9	0.0	88.4	53.6	71.1	15.4	84.2	0.0	0.0	0.0	39.3	861.2
2008	192.0	443.0	3.2	4.4	0.0	137.4	31.5	77.0	23.7	65.4	0.1	0.3	0.0	30.8	1009.0
2009	191.7	476.7	3.7	3.4	1.5	177.6	14.3	107.3	30.3	47.1	2.5	0.0	0.3	32.7	1089.0
2010	135.7	329.8	5.2	0.3	0.0	146.5	27.5	58.7	11.0	31.4	0.0	0.0	0.0	38.4	784.4

b) New Work for Private Sector

Year	Housing	Infra - structure	Factories	Ware-houses	Oil, steel & coal	Schools & Colleges	Uni-versities	Health	Offices	Enter- tainment	Garages	Shops	Agri- culture	Miscell- aneous	All private sector
2005	1098.0	35.8	31.6	31.0	2.4	0.0	0.0	19.4	78.6	43.4	11.7	121.4	2.0	108.4	1583.8
2006	1185.7	78.5	53.0	30.8	0.0	0.0	0.0	20.2	86.8	73.9	12.8	180.7	1.6	136.0	1859.8
2007	1172.7	95.1	53.5	22.7	0.4	0.0	0.0	24.9	78.7	94.5	4.9	224.4	0.4	112.0	1884.1
2008	841.7	83.6	59.3	46.6	0.0	0.0	0.0	18.5	91.0	125.9	3.5	155.8	1.2	113.2	1540.7
2009	744.3	65.5	28.9	26.9	0.5	0.0	0.0	8.1	47.5	82.8	1.4	80.6	1.4	103.7	1191.6
2010	717.7	70.6	30.5	26.2	0.1	0.0	0.0	15.3	27.0	55.8	4.3	71.6	2.1	83.0	1104.2

c) New Work for Public and Private Sector

Year	Housing	Infra - structure	Factories	Ware-houses	Oil, steel & coal	Schools & Colleges	Uni-versities	Health	Offices	Enter - tainment	Garages	Shops	Agri- culture	Miscell- aneous	All Public & Private Work
2005	1257.9	278.3	31.6	32.0	2.4	106.7	41.0	112.6	115.7	86.0	11.7	121.4	2.1	149.1	2348.6
2006	1393.9	345.9	53.7	31.1	0.0	94.8	53.2	67.7	97.5	142.6	12.9	180.7	1.6	201.5	2677.1
2007	1351.2	420.3	54.1	27.6	0.4	88.4	53.6	96.0	94.2	178.7	4.9	224.4	0.4	151.2	2745.3
2008	1033.8	526.6	62.6	51.0	0.0	137.4	31.5	95.5	114.8	191.4	3.7	156.1	1.3	144.1	2549.7
2009	936.0	542.2	32.5	30.3	2.0	177.6	14.3	115.4	77.7	129.9	3.9	80.6	1.7	136.5	2280.6
2010	853.4	400.4	35.7	26.4	0.1	146.5	27.5	74.0	38.0	87.2	4.3	71.6	2.1	121.4	1888.6

¹ Includes output by contractors only

Chapter 2 The Structure of the Industry

Table 2.1 Structure of the Construction Industry

The table below shows the number of businesses that are either registered for VAT with HM Customs and Excise or which operate a PAYE scheme with the Inland Revenue, at March 2010

SIC (2007) class/ subclass	Description	Turnover (£000) size band						
		0 - 99	100 - 499	500 - 1,999	2,000 - 4,999	5,000 - 9,999	10,000+	Total
4110	Development of building projects	550	525	360	70	15	5	1,530
4120	Construction of buildings	1,010	1,150	525	115	40	30	2,875
4211	Construction of roads and motorways	80	130	40	10	5	5	270
4212	Construction of railways and underground railways	0	0	0	0	0	0	5
4221	Construction of utility projects for fluids	0	5	0	0	0	0	5
4222	Construction of utility projects for electricity and telecommunications	5	5	0	0	0	0	10
4291	Construction of water projects	5	5	0	0	0	5	15
4299	Construction of other civil engineering projects n.e.c.	145	145	85	20	20	20	440
4311	Demolition	0	10	5	0	0	0	20
4312	Site preparation	65	40	10	5	0	0	120
4313	Test drilling and boring	5	5	0	0	0	0	10
4321	Electrical installation	625	520	140	40	15	10	1,345
4322	Plumbing, heat and air-conditioning installation	445	445	90	25	15	5	1,025
4329	Other construction installation	65	75	35	5	0	0	185
4331	Plastering	245	150	20	5	0	0	420
4332	Joinery installation	610	460	95	15	0	0	1,185
4333	Floor and wall covering	60	85	25	5	0	0	180
4334	Painting and glazing	170	225	30	5	0	0	435
4339	Other building completion and finishing	105	85	25	5	0	0	215
4391	Roofing activities	65	70	25	5	5	0	170
4399	Other specialised construction activities n.e.c.	520	405	110	20	5	0	1,055
Total		4,950	4,680	1,670	365	135	90	11,885

Source: Inter Departmental Business Register, Office for National Statistics, Statistics Research Branch, Department of Enterprise, Trade and Investment

Figures have been rounded to the nearest 5 to avoid disclosure and thus figures may not add back to totals.

Please note that previous data were supplied using the SIC 2003 code.

**Table 2.2 Northern Ireland Census of Employment
September 2009
Employee Jobs**

SIC03	BUSINESS DESCRIPTIONS	Male Full-time	Male Part-time	Male	Female Full-time	Female Part-time	Female	Total
F	CONSTRUCTION	30,521	1,397	31,918	2,967	1,893	4,860	36,778
41	Construction of buildings	7,714	492	8,206	986	706	1,693	9,899
411	Development of building projects	675	134	809	242	208	450	1,259
412	Construction of residential and non-residential buildings	7,039	358	7,397	745	498	1,243	8,640
4120	Construction of residential and non-residential buildings	7,039	358	7,397	745	498	1,243	8,640
41201	Construction of commercial buildings	855	20	875	79	48	126	1,001
41202	Construction of domestic buildings	6,184	338	6,523	666	450	1,116	7,639
42	Civil engineering	7,739	192	7,932	710	235	945	8,877
421	Construction of roads and railways	*	*	*	*	*	*	*
4211	Construction of roads and motorways	*	*	*	*	*	*	*
4212	Construction of railways and underground railways	0	0	0	0	0	0	0
4213	Construction of bridges and tunnels	0	0	0	0	0	0	0
422	Construction of utility projects	*	*	*	*	*	*	*
4221	Construction of utility projects for fluids	0	0	0	0	0	0	0
4222	Construction of utility projects for electricity and telecommunications	*	*	*	*	*	*	*
429	Construction of other civil engineering projects	5,188	125	5,314	573	179	752	6,065
4291	Construction of water projects	*	*	39	*	*	6	45
4299	Construction of other civil engineering projects n.e.c.	*	*	5,275	*	*	746	6,020
43	Specialised construction activities	15,068	712	15,780	1,270	952	2,222	18,002
431	Demolition and site preparation	597	12	609	27	23	50	659
4311	Demolition	*	*	119	*	*	18	138
4312	Site preparation	447	10	457	16	11	27	484
4313	Test drilling and boring	*	*	32	*	*	5	37
432	Electrical, plumbing and other construction installation activities	7,999	294	8,293	751	484	1,235	9,528
4321	Electrical installation	4,403	127	4,530	386	256	642	5,172
4322	Plumbing, heat and air-conditioning installation	2,932	137	3,069	285	190	475	3,544
4329	Other construction installation	664	30	694	80	38	118	812
433	Building completion and finishing	4,060	295	4,355	349	308	657	5,012
4331	Plastering	365	58	422	24	32	56	478
4332	Joinery installation	1,587	122	1,709	124	127	250	1,959
4333	Floor and wall covering	313	14	327	35	28	63	390
4334	Painting and glazing	1,064	67	1,131	103	64	167	1,298
43341	Painting	796	52	847	56	44	100	947
43342	Glazing	269	15	284	47	20	66	350
4339	Other building completion and finishing	731	35	766	64	57	121	888
439	Other specialised construction activities	2,412	111	2,523	142	138	280	2,803
4391	Roofing activities	449	13	462	32	32	63	525
4399	Other specialised construction activities n.e.c.	1,964	97	2,061	111	106	216	2,277
43991	Scaffold erection	341	13	354	13	11	24	378
43999	Specialised construction activities (other than scaffold erection) n.e.c.	1,623	84	1,707	98	95	192	1,899
*	Not shown due to confidentiality constraints							

Source: NI Census of Employment, DETI, September 2009

- NOTES: 1 The Census of Employment is a statutory enquiry of all employers in Northern Ireland, carried out biennially under the Statistics of Trade and Employment (NI) Order 1988.
- 2 The Census of Employment covers employee jobs only. It excludes: agriculture (but includes animal husbandry service activities and hunting, trapping and game propagation) the self-employed, HM Armed Forces, private domestic servants, homeworkers and trainees without a contract of employment (non-employed status).
- 3 Persons working 30 hours or less per week are normally regarded as being in part-time employment.
- 4 The Census of Employment counts the number of jobs rather than the number of persons with jobs. Therefore a person holding both a full-time and a part-time job, or someone with two part-time jobs, will be counted twice.
- 5 Employees are classified to a Standard Industrial Classification (SIC07) from the business description for each employment unit.

Table 2.3 Northern Ireland Employee Jobs¹ in Construction

Year	Quarter	Employee Jobs - Unadjusted	Quarterly Change- Unadjusted	Employee Jobs- Seasonally Adjusted	Quarterly Change- Seasonally Adjusted
2000	March	34,540	180	34,650	390
	June	34,940	400	35,030	380
	September	35,690	750	35,620	590
	December	35,950	260	35,830	220
2001	March	36,250	300	36,350	520
	June	36,250	0	36,340	-20
	September	36,530	280	36,470	130
	December	37,150	610	37,020	550
2002	March	36,990	-160	37,090	80
	June	36,740	-240	36,820	-280
	September	36,720	-20	36,670	-140
	December	36,310	-410	36,190	-480
2003	March	35,860	-450	35,960	-230
	June	36,360	500	36,430	470
	September	36,440	80	36,410	-20
	December	36,750	310	36,620	210
2004	March	37,100	350	37,210	580
	June	37,180	80	37,230	20
	September	37,270	80	37,250	20
	December	37,550	280	37,420	170
2005	March	37,770	220	37,870	450
	June	38,750	980	38,780	910
	September	39,310	560	39,300	520
	December	41,150	1,830	41,010	1,720
2006	March	41,790	650	41,910	900
	June	42,300	510	42,320	410
	September	42,690	390	42,680	360
	December	43,140	450	43,010	330
2007	March	43,460	320	43,580	570
	June	44,710	1,250	44,730	1,140
	September	45,320	610	45,310	580
	December ^(R)	46,790	1,470	46,660	1,350
2008	March ^(R)	45,810	-980	45,940	-720
	June ^(R)	44,790	-1,020	44,800	-1,140
	September ^(R)	43,420	-1,370	43,400	-1,400
	December ^(P)	41,690	-1,730	41,580	-1,830
2009	March ^(R)	39,410	-2,270	39,520	-2,050
	June ^(R)	38,160	-1,260	38,170	-1,350
	September ^(R)	36,700	-1,460	36,680	-1,500
	December ^(R)	35,480	-1,220	35,390	-1,280
2010	March ^(R)	34,950	-530	35,050	-340
	June ^(P)	34,350	-610	34,360	-690

Source: Quarterly Employment Survey (QES), DETI

¹ Figures are rounded to the nearest 10 and may not sum due to rounding.

(P) Provisional; (R) Revised

Notes:

Estimates of the number of employee jobs are obtained from the Quarterly Employment Survey (QES). The QES covers all public sector bodies, all private sector firms with 25 or more employees and a sample of the remainder. The sample size has been chosen in order that estimates of total employee jobs should be accurate to within +/- 1% of the Census of Employment total. The survey collects information on numbers of persons in full-time and part-time employment. It should be noted that the survey counts the number of jobs rather than the number of persons with jobs. For example, a person holding both a full-time job and a part-time job, or someone with two part-time jobs, will be counted twice.

**Table 2.4 Northern Ireland Labour Force Survey
Self employed in Construction Industry**

Year (Quarter 4)	Number
2010	29,000
2009	26,000
2008	29,000
2007	32,000
2006	29,000
2005	33,000
2004	36,000
2003	35,000
2002	28,000
2001	26,000

Notes:

Figures are rounded to the nearest thousand.

Above estimates are subject to sampling error.

Allocation between self employed and employees status is by self assessment.

From 2007, the above estimates are based on re-weighted LFS estimates, which are in line with the 2008 mid-year population estimates.

Prior to 2007, the above estimates are based on weighted LFS estimates, which are in line with the 2006 mid-year population estimates.

**Table 2.5 Northern Ireland Annual Survey of Hours and Earnings
Earnings and Hours in the Construction Industry**

full time male employees, on adult rates, whose pay was not affected by absence

Construction Industry - SIC 2003 Division F

At April Each Year	Mean gross weekly earnings Of Which				Percentage of employees who received		
	Total	Overtime Pay	PBR etc	Premium payments	Overtime pay	PBR etc	Premium payments
2002	£371.0	£31.3	x	x	30.6%	7.5%	2.6%
2003	£386.9	£25.6	x	x	28.2%	13.6%	1.4%
2004	£399.2	£25.8	x	x	25.8%	7.9%	3.1%
2004 ¹	£403.5	£25.1	x	x	24.9%	4.8%	3.0%
2005 ¹	£392.7	£17.7	x	x	20.0%	6.0%	1.1%
2006 ¹	£430.6	£26.8	x	x	23.4%	5.0%	2.7%
2006 ²	£429.6	£27.2	x	x	23.5%	4.8%	2.8%
2007 ²	£456.2	£29.7	x	x	21.1%	5.2%	1.4%
2008 ²	£471.7	£27.7	x	x	24.7%	6.4%	0.0%
2009 ³	£523.2	£25.5	x	x	20.3%	3.3%	0.7%
2010 ³	£531.0	£29.0	x	x	26.8%	5.9%	0.5%

At April Each Year	Distribution of weekly earnings			Mean hourly earnings excluding overtime*	Mean weekly hours	
	10% earned less than	Median 50% earned less than	10% earned more than		Mean total weekly hours (including overtime)	Mean weekly overtime hours
2002	£215.8	£328.4	£549.4	£8.60	42.4	2.9
2003	£234.5	£349.0	£591.9	£9.12	42.0	2.4
2004	£223.1	£336.3	x	£9.35	42.3	2.4
2004 ¹	£231.9	£336.0	x	£9.47	42.3	2.3
2005 ¹	£185.9	£340.0	x	£9.34	41.7	1.5
2006 ¹	£203.0	£375.5	x	£10.22	41.5	2.0
2006 ²	£205.6	£373.3	x	£10.19	41.5	2.0
2007 ²	£242.7	£390.8	x	£10.57	42.8	2.4
2008 ²	£243.8	£408.6	x	£11.03	42.3	2.1
2009 ³	£259.9	£436.3	x	£12.32	42.2	1.8
2010 ³	£275.2	£443.9	x	£12.41	42.6	2.1

PBR - payment by results, includes piecework, bonuses, commission and incentive payments (includes profit related pay until 1996).

Premium pay - for shift-work, and for night or week-end work where these are not treated as overtime.

x - data unavailable or suppressed

* Average hourly earnings are calculated by dividing the sum of the weekly earnings of the group of employees by the sum of their total weekly hours.

¹ To improve coverage, supplementary data was collected for the 2004 and subsequent ASHE surveys for people who changed or started new jobs between sample selection and the survey period. The ASHE results since 2004 are therefore discontinuous with earlier results.

² For the 2006 ASHE results, ONS also introduced a small number of methodological changes. The ASHE results since 2006 are therefore discontinuous with earlier results.

³ For 2009 ASHE results, ONS moved from using the SIC 2003 Industrial Classifications to using the SIC 2007 Industrial Classifications. The ASHE results since 2009 are therefore discontinuous with earlier results.

**Table 2.6 Northern Ireland Annual Survey of Hours and Earnings
Earnings in the Construction Industry by Occupation**

full-time male employees, on adult rates, whose pay was not affected by absence

	SOC 531 - Construction trades		SOC 5315 - carpenters and joiners		SOC 912 - elementary construction occupations	
At April Each Year	Mean gross weekly earnings	Mean hourly earnings excluding overtime	Mean gross weekly earnings	Mean hourly earnings excluding overtime	Mean gross weekly earnings	Mean hourly earnings excluding overtime
2002	£319.8	£7.43	£312.7	£7.33	£275.2	£5.83
2003	£367.6	£8.28	£334.3	£7.59	£274.9	£6.19
2004	£345.6	£8.01	£343.0	£7.57	£336.0	£7.49
2004 ¹	£348.8	£8.09	£345.8	£7.64	£334.4	£7.46
2005 ¹	£332.5	£7.97	£340.6	£7.85	£321.3	£7.03
2006 ¹	£404.2	£9.13	£377.3	£8.53	£292.0	£6.69
2006 ²	£407.9	£9.19	£379.1	£8.56	£291.7	£6.70
2007 ²	£411.6	£9.43	£412.3	£9.43	£333.1	£7.59
2008 ²	£415.8	£10.11	£385.3	£9.33	£406.3	£8.33
2009 ³	£417.8	£9.88	£408.0	£9.17	£347.5	£7.93
2010 ³	£421.4	£9.75	£409.5	£9.12	£410.3	£8.99

SOC - Standard Occupational Classification 2000

¹ To improve coverage, supplementary data was collected for the 2004 and subsequent ASHE surveys for people who changed or started new jobs between sample selection and the survey period. The ASHE results since 2004 are therefore discontinuous with earlier results.

² For the 2006 ASHE results, ONS also introduced a small number of methodological changes. The ASHE results since 2006 are therefore discontinuous with earlier results.

³ For 2009 ASHE results, ONS moved from using the SIC 2003 Industrial Classifications to using the SIC 2007 Industrial Classifications. The ASHE results since 2009 are therefore discontinuous with earlier results.

Table 2.7 Northern Ireland Annual Survey of Hours and Earnings
Earnings and Hours in the Construction Industry and in all Industries and Services

full-time male employees, on adult rates, whose pay was not affected by absence
 Construction Industry SIC 2003 Division F

At April Each Year	FULL-TIME MALES						
	CONSTRUCTION INDUSTRY				ALL INDUSTRIES AND SERVICES		
	Mean gross weekly earnings	Mean hourly earning excluding overtime	Mean total weekly hours (including overtime)		Mean gross weekly earnings	Mean hourly earning excluding overtime	Mean total weekly hours (including overtime)
2002	£371.0	£8.60	42.4		£431.9	£10.44	41.1
2003	£386.9	£9.12	42.0		£447.7	£10.91	40.7
2004	£399.2	£9.35	42.3		£466.0	£11.21	41.3
2004 ¹	£403.5	£9.47	42.3		£463.5	£11.16	41.3
2005 ¹	£392.7	£9.34	41.7		£486.5	£11.75	41.1
2006 ¹	£430.6	£10.22	41.5		£502.9	£12.20	41.1
2006 ²	£429.6	£10.19	41.5		£500.9	£12.15	41.1
2007 ²	£456.2	£10.57	42.8		£501.4	£12.17	41.0
2008 ²	£471.7	£11.03	42.3		£520.7	£12.57	41.2
2009 ³	£523.2	£12.32	42.2		£543.6	£13.40	40.3
2010 ³	£531.0	£12.41	42.6		£539.3	£13.10	40.9

¹ To improve coverage, supplementary data was collected for the 2004 and subsequent ASHE surveys for people who changed or started new jobs between sample selection and the survey period. The ASHE results since 2004 are therefore discontinuous with earlier results.

² For the 2006 ASHE results, ONS also introduced a small number of methodological changes. The ASHE results since 2006 are therefore discontinuous with earlier results.

³ For 2009 ASHE results, ONS moved from using the SIC 2003 Industrial Classifications to using the SIC 2007 Industrial Classifications. The ASHE results since 2009 are therefore discontinuous with earlier results.

2.8 Statistics of accidents reported to HSENI 2000/01 – 2009/10

2.8.1. All accidents – fatal, major injury and over 3 day

Year	Fatal	Major	Over 3 Day	Total
2000/01	12	578	3,421	4,011
2001/02	9	595	3,547	4,151
2002/03	21	650	3,039	3,710
2003/04	19	675	2,642	3,336
2004/05	15	640	2,359	3,014
2005/06(P)	20	599	2,645	3,264
2006/07	18	510	2,318	2,846
2007/08	16	557	2,179	2,752
2008/09	19	498	1,947	2,464
2009/10	8	466	1,912	2,386

2.8.2. All accidents by industrial sector

Year	Agric	Constr	Mfg&Q ¹	Educ	Health	Other	Total
2000/01	72	245	1,259	380	498	1,557	4,011
2001/02	57	236	1,195	392	467	1,804	4,151
2002/03	54	212	1,030	481	505	1,428	3,710
2003/04	42	246	963	350	454	1,281	3,336
2004/05	37	250	863	275	442	1,147	3,014
2005/06(P)	44	303	896	336	514	1,171	3,264
2006/07	32	276	808	211	480	1,039	2,846
2007/08	17	332	808	141	436	1,018	2,752
2008/09	23	302	722	306	460	651	2,464
2009/10	16	230	566	305	487	782	2,386

2.8.3. Major accidents by industrial sector							
Year	Agric²	Constr	Mfg & Q	Educ	Health	Other	Total
2000/01	N/A	68	122	206	52	130	578
2001/02	N/A	55	147	199	58	136	595
2002/03	N/A	60	116	293	58	123	650
2003/04	N/A	81	148	181	86	179	675
2004/05	N/A	98	146	119	88	189	640
2005/06(P)	N/A	87	134	154	88	136	599
2006/07	N/A	92	133	85	57	143	510
2007/08	N/A	128	187	34	48	160	557
2008/09	N/A	104	159	30	54	151	498
2009/10	N/A	81	139	40	71	135	466
2.8.4. Fatal accident incidence rates per 100,000 workers by industrial sector							
Year	Agricultur e	Construction	Manufacturing	All Industries			
2000/01	19.16	8.5	1.91	0.94			
2001/02	13.69	11.4	1.01	0.93			
2002/03	12.4	12.7	1	2.6			
2003/04	19.2	10.2	0	2.3			
2004/05	11.9	6.7	2	1.6			
2005/06(P)	28.5	7.4	3.1	2.3			
2006/07	14.7	8.5	3.1	2.2			
2007/08	19.8	6.4	1.1	2.1			
2008/09	16	2.8	7.1	2.6			
2009/10	4.2	1.5	2.2	1.1			

¹ Mfg & Q: Manufacturing and Quarries.

² Non-fatal Agriculture accidents are not classified as "major" and "over 3 day", but simply as "non-fatal".

(P) = provisional figures

2.8.5. Construction sector – cause of accident by type of accident						
Cause	2000/01			2001/02		
	Fatal	Major	Over 3 day	Fatal	Major	Over 3 day
Fall	3	39	38		24	36
Struck by		8	35	1	7	35
Handling, strains/sprains		5	35		1	35
Slip or trip		2	21		4	24
Vehicle		5	6		1	4
Collapsing or overturning		2	2	1	2	3
Others		7	37	2	16	34
Totals	3	68	174	4	55	171
Cause	2002/03			2003/04		
	Fatal	Major	Over 3 day	Fatal	Major	Over 3 day
Fall	5	29	20	3	29	34
Struck by		6	27		16	26
Handling, strains/sprains		2	31		4	41
Slip or trip		7	30		18	27
Vehicle		3	4		1	3
Collapsing or overturning	2	1	5	3	2	3
Others	2	12	26		11	26
Totals	9	60	143	6	81	160
Cause	2004/05			2005/06(p)		
	Fatal	Major	Over 3 day	Fatal	Major	Over 3 day
Fall	2	40	25	3	42	31
Struck by		16	23		13	48
Handling, strains/sprains		10	50		5	55
Slip or trip		17	17		12	28
Vehicle	1	1	3		1	8
Collapsing or overturning	1	3	2		1	1
Others		11	24	2	13	40
Totals	4	98	148	5	87	211

2.8.5. Construction sector cause of accident by type of accident (continued)

Cause	2006/07			2007/08		
	Fatal	Major	Over 3 day	Fatal	Major	Over 3 day
Fall	1	40	33	2	56	38
Struck by		15	28	1	17	33
Handling, strains/sprains		5	36		6	43
Slip or trip		16	38		20	35
Vehicle		7	2	2	3	3
Collapsing or overturning	2	2	1			
Others	3	7	42		26	47
Totals	6	92	180	5	128	199

Cause	2008/09			2009/10		
	Fatal	Major	Over 3 day	Fatal	Major	Over 3 day
Fall	1	41	25	1	34	18
Struck by		12	36		6	25
Handling, strains/sprains		11	56		8	36
Slip or trip		22	25		15	24
Vehicle					2	4
Collapsing or overturning		4			0	2
Others	1	14	48		16	38
Totals	2	104	190	1	81	147

2.8.6. Construction sector description of fatal accidents

Year	Number of Fatalities	Occupation	Employment Category	Description	Date
2000/01	3	Plumber	Self-employed	Fell 13m from landing.	28/04/2000
		Labourer	Employee	Fell from scaffolding.	25/09/2000 (Died 04 10 2000)
		Demolition worker	Employee	Fell through opening in floor of industrial premises.	16/11/2000
2001/02	4	Joiner	Employee	Crushed under bale of reinforced mesh that fell 8m during lifting operation.	21/06/2001
		Electrician	Self-employed	Electrocuted while rewiring a house.	19/11/2001
		Builder	Self-employed	Crushed when entangled between slewing ring and digger tracks.	04/12/2001
		Worker	Employee	Electrocuted when boom of excavator came in contact with 33kv overhead power lines.	15/12/2001
2002/03	8 +1 child	Painter	Employee	Electrocuted while working from MEWP when it came into contact with overhead power line.	08/05/2002
		Child (boy aged 5 yrs)	Member of the public	Trapped in 225mm diameter sewer pipe.	01/06/2002
		Roofer	Self-employed	Fell from roof while carrying out minor repairs.	19/07/2002
		Labourer	Self-employed	Crushed underneath staircase that collapsed.	03/09/2002
		Labourer	Employee	Fell following collapse of 8 staircases during placing of the staircases.	03/09/2002
		Businessman	Self-employed	Crushed under wall knocked over by arm of excavator.	18/11/2002
		Joiner	Employee	Fell 3.6m from cage mounted on telescopic handler; cage also fell onto the deceased.	03/12/2002
		Mastic asphalter	Employee	Slipped on hip roof and fell underneath middle guard rail and onto flat roof	21/01/2003 (Died 23 01 2003)
		Builder	Self-employed	Fell 13.5m from extension ladder mounted on top of tower scaffold.	07/02/2003
2003/04	6	Joiner	Employee	Fell 2.8m through an opening in the floor of a timber framed house	14/05/2003 (Died 16/05/2003)
		Sub-contractor	Self-employed	Crush in a trench collapse	30/08/2003
		Mushroom Picker	Employee	Crushed under an overturned excavator	23/10/2003
		Labourer		Fell from a ladder	17/11/2003
		Digger driver	Self-employed	Crushed under a wall collapse during demolition	10/12/2003 (Died 21/02/2004)
		Builder	Self-employed	Fell approx 7m off a roof	04/03/2004
2004/05	4	Joiner	Employed	Fell approx 2.4m from a wall with wet mortar	04/10/2004 (Died 07/10/2004)
		Labourer	Employed	Crushed under a wall collapse	12/02/05
		Roofer	Employed	Fell approx.12.3m from a roof	15/03/2005
		Road Worker	Self-employed	Knocked over by a reversing lorry	22/03/2005

2.8.6. Construction sector description of fatal accidents (continued)

Year	Number of Fatalities	Occupation	Employment Category	Description	Date
2005/06	5	Roofer	Employee	Fell approx. 5m through a roof light onto concrete floor	30/05/2005
		Fitter	Employee	Died in explosion at water treatment works whilst carrying out construction maintenance work	06/02/2006
		Farmer	Self-employed	Fell from roof (5m) through Perspex skylight on corrugated farm shed	13/10/2005 (Died 14/10/2005)
		Painter/ decorator	Employee	Fell from ladder whilst painting fascia at eaves of house	12/06/2005
		Road Worker	Self-employed	Electrocuted when an articulated lorry made contact with an overhead powerline	28/02/2006
2006/07	6	Maintenance	Employee	Fell from roof into well at Stewart Hall, Stewartstown	01/05/2006
		Construction Worker	Employee	Buried when a trench collapsed on top of him at construction site, Ballywatter Road, Millisle	08/05/2006
		Digger driver	Self-employed	A 9" wall collapsed on him during ground work on a farmyard near Limavady.	27/07/2006
		Joiner	Employee	Mobile building collapsed on top of IP when it was being moved at RAF Aldergrove.	19/09/2006
		Telescopic Handler Driver	Employee	Drowned in tank at construction of new pumping station in Portrush.	06/10/2006
		Engineer		Electrocuted when drilling rig made contact with overhead power line.	31/01/2007
2007/08	5	Grab Driver	Employed	Struck by lorry while standing beside his vehicle	02/05/2007
		Builder*	Self Employed	Fell from scaffolding at a site in Dunmurry	11/08/2007 (Died 18/08/2007)
		Builder*	Self Employed	Fell from garage roof at a house under construction in Ballynahinch	12/09/2007
		General Labourer	Employed	Died from injuries received when struck by collapsing gable wall in Fintona	25/01/2008
		General Labourer	Employed	Struck by reversing vehicle on site in Belfast	27/02/2008
2008/09	2	Plant Operator	Employed	Died when dumper he was driving went off the edge of steep earth ramp	09/05/2008
		General Labourer	Employed	Died from injuries sustained after fall from height on construction site	11/12/2008 (Died 26/12/2008)
2009/10	1	General Operative	Employed	Fell from ladder whilst assisting in repair of roof tiles. Possible seizure/fit	09/07/2009
2010/11	1	Partner	Self Employed	IP fell onto a concrete floor as he was attempting to strip the original roof in preparation for the new roof sheeting	05/06/2010 (Died 19/6/2010)

* accidents not reportable under RIDDOR but investigated by HSENI

Survey Response for QCE

For the quarter 1st October to 31st December 2010, 87% of contracting firms in the sample participated in the survey. A breakdown of response by stratum is highlighted below. Construction firms are stratified according to annual turnover, ranging from the small stratum one firms with an annual turnover of less than £125,000 through to the large stratum six firms which have an annual turnover in excess of £10.5 million.

2010 Oct - Dec	Stratum	Annual Turnover (£ '000)	Response (%)
	1	0 - 124	75
	2	125 - 549	80
	3	550 - 2,099	91
	4	2,100 - 5,249	92
	5	5,250 - 10499	89
	6	10,500+	93
	Overall		87

Notes to Editors

1. Statistics derived from the QCE are based on returns made by Construction Firms and Public Sector Direct Labour Departments.
2. The sample of firms in the QCE includes only VAT registered firms in Standard Industrial Classification Division 41 - 43 (Construction) on the Inter Departmental Business Register (IDBR).
3. Construction activity measured by QCE includes general construction and demolition work, construction and repair of buildings, civil engineering, installation of fixtures and fittings and any other building completion work.
4. The following definitions are used in the QCE to describe Construction Activity:

New Work is any new construction activity e.g. factory and office extensions, major re-construction, major alterations, site preparation and demolition.

Repair and Maintenance is all on-site work not defined as new construction, e.g. housing conversions, extensions and improvements.

Housing refers to all housing construction activity, both private and public sector.

Infrastructure refers to any work on roads and car parks, water and sewerage, electricity, gas, communications, air transport, railways, harbours and waterways.

Other Work refers to factories, warehouses, oil, steel gas and coal, schools and colleges, offices and banks, shops, universities, entertainment, agriculture, health and welfare, garages and miscellaneous.

5. The base year for all the series published is 2005 (2005 = 100).
6. Tables 1.1, 1.2, 1.3, 1.4, 1.7, 1.8 (b) are all seasonally adjusted. Seasonal adjustment aids interpretation by removing seasonal variation. The data is seasonally adjusted using X12 ARIMA software.
7. Totals may not tally as each category is individually deflated and seasonally adjusted.

8. Results, particularly for the latest quarter, are provisional and subject to revision as fuller information becomes available from subsequent returns in future quarters.

The time series contained within Chapter 1-Output are updated quarterly to take account of:

- Firms not returning forms on schedule;
- Validation of data;
- Changes to Grossing Factors;
- Changes to the Seasonal Adjusters;
- Changes to Deflators;

9. The QCE is a sample survey, the results of which are subject to both sampling and non-sampling error.

For further information please contact Nicola Shiels:

Telephone (028) 9034 8175 E-mail Nicolaa.Shiels@dfpni.gov.uk

Fax (028) 9034 8276

Electronic and hard copies of this bulletin are available from:

Central Survey Unit
Northern Ireland Statistics and Research Agency
McAuley House
2 - 14 Castle Street
BELFAST
BT1 1SY

Or on the Central Survey Unit Website at <http://www.csu.nisra.gov.uk>